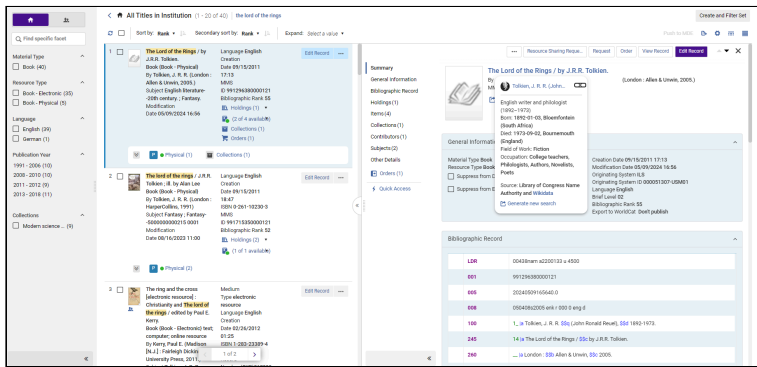


Alma Roadmap – Completed – 2025 H1

Metadata and Linked Open Data

What's New	Highlights	Impact
<p>The Titles Staff Searches are updated and redesigned for better usability, performance, productivity, and overall user experience.</p>	<ul style="list-style-type: none"> A new “side by side” presentation reflects general information regarding the title and its inventory. A new table view for easy scanning of the search results. Actionable sections within the right panel enables users to edit specific information associated with the titles' inventory without leaving the search results. 	<p>Simpler workflows due to new user interface, introducing efficient navigation:</p> <ul style="list-style-type: none"> Reduced number of steps needed for common actions MARC simple view upfront New Item section Actionable inventory information <p>Available for opt-in by all users.</p>



The new titles search split view, including details on the bibliographic record, creator and inventory, and the ability to perform actions directly from search

Title	Creator / Imprint	MMS ID	Physical Availability	Electronic Availability	Digital Availability	Badges and icons
The Lord of the Rings / by J.R.R. Tolkien	By Tolkien, J. R. R. (London: Allen & Unwin, 2005.)	99129638000121	Physical version at General Main Library: 410 (Items: 1 out of 3)			Holdings (1) • Items (2 of 4 available) • Collections (1) Orders (1)
The Lord of the Rings / by J.R.R. Tolkien. - Ill. by Alan Lee	By Tolkien, J. R. R. (London: HarperCollins, 1991)	99171330000121	Physical version temporarily at Audio-Visual Media Library: 1 (Items out of 1 available) Phys...			Holdings (2) • Items (1 of 1 available)
The ring and the cross [Electronic resource] : Christianity and The Lord of the Rings / edited by Paul...	By Henry, Paul E. (Madison, Ill.: Fairleigh Dickinson University Press, 2011)	99114901500121		Electronic version at Ebook Central: Ebook Central Academic Complete International Edition...		Electronic Portfol... (1) •
The international relations of Middle Earth [Electronic resource] : learning from the lo...	By Ruane, Abigail E. (Ann Arbor: University of Michigan Press, 2012.)	99121295000121		Electronic version at Ebook Central: Ebook Central Academic Complete International Edition...		Electronic Portfol... (1) •
The international relations of Middle Earth: learning from The Lord of the Rings / Abigail E. ...	By Ruane, Abigail E. (Ann Arbor: University of Michigan Press, 2012.)	99139120000121	Physical version at General Main Library: 2342: 802 2012 (1 Items out of 1 available)			Holdings (1) • Items (1 of 1 available)
Frodo's journey : discovering the hidden meaning of The Lord of the Rings / Joseph Thorne	By France, Joseph, (Charlotte, North Carolina: Saint Benedict Press, 2013)	99135480000121		Electronic version at Ebook Central: Ebook Central Academic Complete International Edition...		Electronic Portfol... (1) • Collections (1)
The Lord of the Rings, 1954-2004 [Electronic resource] : a chronology in honor of Richard...	By Blackwelder, Richard E. (Mesa, Ariz.: Wings of a Dove Press, 2005.)	99115997000121		Electronic version at Ebook Central: Ebook Central Academic Complete International Edition...		Electronic Portfol... (1) • Collections (1)
Unusual format of the Lord of the Rings: from the page to the screen [Electronic resource] / ...	By Pines, Lynette R. (Westport, Conn.: Praeger Publishers, 2005)	99177910000121		Electronic version at ABC-CLIO, ABC-CLIO eBooks, Full Text Available: 5371316400000121...		Electronic Portfol... (2) • Collections (1)
The relationship of the ring being the first part of the Lord of the Rings by J.R.R. Tolkien.	By Tolkien, J. R. R. (Boston: Houghton Mifflin Harcourt, [2012])	99184910000121	Physical version at General Physical Library: 0000002215 (Item in name search is available)			Holdings (2) • Items (1 of 1 available)

The new titles search table view



AI Metadata Assistant - MARC 21 Records

What's New	Highlights	Impact
<p>Alma allows libraries to combine innovative AI solutions along with expert cataloging knowledge to easily and efficiently create and enrich bibliographic data.</p>	<ul style="list-style-type: none"> • Creating MARC 21 English records using information such as the title and/or images of the resource (e.g. back cover, title page, colophon). • Enriching existing MARC 21 English records for books. • Giving catalogers an AI assistant that can suggest relevant metadata they can use, such as LC subjects, summary notes, etc. • Expanding the AI generated metadata suggestions from the library's templates • Configurable normalization of the AI generated metadata suggestions 	<p>Reduce the time and effort a cataloger spends on creating or enriching each bibliographic record.</p>

Ancillary Justice Ann Leckie (99247740700521)

Record 02 MARC21 Bib

Enrich Record With AI Assistant

Enrichment will be done according to the metadata in the record. You may also upload images of the book. In order for the AI assistant to be able to enrich the record, it will be released and locked for editing. The enriched draft will be pushed to MDE when ready.

Title
Ancillary Justice

Attachments
Upload up to 4 images of the book (e.g. back cover, colophon)

Drop a file or Browse files

Cancel Enrich Record

Enriching a brief record using the AI Metadata Assistant

New Record From AI Assistant

Enter the metadata and/or images you want to use to generate the record. The new record draft will be pushed to MDE when ready.

Title*

This field is required

Content Note

Author

Summary Note

ISBN

Record Format
 Marc21

Expand from Template
 Books

Attachments
 Upload up to 4 images of the book (e.g. back cover, cover, etc.)

Drop a file or Browse

Search...
 None
 Books
 Maps
 Music

Creating a new record using the AI Metadata Assistant



AI Metadata Assistant - Granular Metadata Requests

What's New	Highlights	Impact
<p>Libraries and librarians have more control over what metadata requests to set the AI.</p>	<ul style="list-style-type: none"> • Admin is able to disable certain metadata requests at the institution level, reducing the likelihood of certain metadata being generated by the AI • Admin can define whether to send the AI a summary request, and if so - whether to request a copied and/or generated summary • Cataloger is able to select what metadata to request the AI to generate (e.g. only request a table of contents enrichment when uploading an image of the table of contents) 	<p>Enhance the library's and the librarian's control over the requested metadata types to generate, improving generated metadata quality and usefulness for the library.</p>

New Record From AI Assistant

Enter the metadata and/or images you want to use to generate the record. The new record draft will be pushed to MDE when ready.

Title*

This field is required

Author

ISBN

Content Note

Q Search...

- Requested Metadata
- Request Summary
- Request Subjects
- Request Content Information
- Request Additional Metadata

Requested Metadata: All

Deciding what to request the AI to generate

Open Authority Headings Menu Action in the Metadata Editor



CERV Enhancement (ID #8819)

What's New	Highlights	Impact
When working in the Metadata Editor, catalogers are able to open the authority headings lookup using a menu action (in addition to the F3 keyboard shortcut).	<ul style="list-style-type: none"> Metadata Editor has a menu action in the "Editing Actions" menu that opens the authority headings lookup, similar to the F3 keyboard shortcut. Catalogers are able to select whether to use the keyboard or menu for linking bibliographic headings to authority records. 	Catalogers are able to efficiently work on a wider selection of devices, including ones (such as tablets) that don't have function keys.

Support Preferred Term Correction Flipping Headings that Change Tag Number



Idea Exchange

What's New	Highlights	Impact
Linking and preferred term correction handle cases where the bibliographic heading is linked to an authority via a cross-reference, but	<ul style="list-style-type: none"> PTC corrects the heading to the preferred term when 	Better automated authority updates, keeping the

What's New	Highlights	Impact
<p>the preferred and non-preferred terms are in different fields (for example, the preferred term is in authority field 130, and cross-reference in authority is in 410).</p>	<p>the preferred and non-preferred terms are in different fields.</p> <ul style="list-style-type: none"> • PTC updates the field number of the bibliographic heading in the bibliographic record to match the linked authority record's preferred term. • The library is able to review these changes in the Authority Control Task List. 	<p>library's catalog up to date, and reducing the need for manual corrections.</p>

XSL Normalization for Metadata Records

What's New	Highlights	Impact
<p>By working with normalization rules, the institution is able to manipulate its metadata using XSL, enabling complex transformations with a powerful programming language.</p>	<ul style="list-style-type: none"> • When creating new normalization rules, the option to use XSL is available. • By utilizing XSL normalization rules, one can apply complex or advanced logic for metadata normalization and manipulation. • A new user privilege gives the institution's administrator control over who is granted access to this new functionality. 	<p>Using a programming language to manipulate metadata records enables the implementation of complex logic.</p>

Support Respecting MARC Subfields When Linking Bibliographic Headings - General Availability

What's New	Highlights	Impact
<p>Based on the Alma Authority Focus Group (AAFQ) feedback, libraries are able to select whether to force subfields to be considered when linking to bibliographic headings.</p>	<p>Bibliographic record fields only link to authority headings if the matching content is in the same subfields.</p>	<p>The linking accurately reflects not only matching content but also matching cataloged subfields.</p>



Permanent Linked Data Enrichment of URIs in MARC Records

[Linked Open Data](#) theme

What's New	Highlights	Impact
The cataloger is able to add URIs of linked authorities to records as part of the cataloging process in the metadata editor and as part of the linking and PTC jobs.	<ul style="list-style-type: none"> Expanding the linked data enrichment process to the cataloging workflow from existing authorities. Support adding URIs permanently to the records. The process is configurable to match each institution's needs. 	The cataloger enjoys a seamless workflow for adding URIs to relevant subfields automatically, creating a basis for continuous work based on the authorities' IDs.

back to [Metadata and Linked Open Data Roadmap](#)



Work Search

[Linked Open Data](#) theme

What's New	Highlights	Impact
Searching for Linked Open Data Work records and view related information in Alma's catalog.	<ul style="list-style-type: none"> It is possible to search for Linked Open Data Work records by the record's metadata. The search displays all Instance records linked to the Work record. 	The cataloger has a simpler and quicker process for identifying Work records and the Instances linked to them.

back to [Metadata and Linked Open Data Roadmap](#)



Support Linked Open Data for Local Authorities

[Linked Open Data](#) theme

What's New	Highlights	Impact
Local authorities can be linked to other authorities using VIAF and gain linked data capabilities.	<ul style="list-style-type: none"> Adding configurations extract global IDs to map local authorities to VIAF clusters. Enhancing linked data functionalities for local authorities, such as displaying info cards and contributor pages and enabling URI enrichment. 	Librarians can extract global IDs from local authorities and map to VIAF and experience linked data enhancements.

back to [Metadata and Linked Open Data Roadmap](#)

Partial Linking of Name/Title Headings - General Availability

What's New	Highlights	Impact
<p>Based on work and feedback from the Alma Authority Focus Group (AAFG), Alma can control the name portion of the name/title combination so that changes to the authorized form in the name authority record are reflected in the bibliographic heading.</p>	<ul style="list-style-type: none"> When a name/title bibliographic heading does not match an authority record, but there is a matching name authority, the heading is partially linked to it. When the authorized form of a name changes, the change will be reflected in partially-linked name/title headings. 	<p>Automated name authority updates for headings that include both name and title.</p>

back to [Metadata and Linked Open Data Roadmap](#)

Special Characters Dialog Box in Metadata Editor



CERV Enhancement (ID #8998)

What's New	Highlights	Impact
<p>When working in the MD Editor catalogers are able to open a dialog box and select a special character to enter into the record.</p>	<ul style="list-style-type: none"> The Metadata Editor has a dialog box containing special characters, where the operator can select the special character. Selecting the special character inserts it where the cursor indicator is when the dialog box was opened. The dialog box can be opened using a menu option or a keyboard shortcut. 	<p>Cataloging records with special characters is more convenient and efficient.</p>

back to [Metadata and Linked Open Data Roadmap](#)

Support EDTF Date/Time Fields Validation

What's New	Highlights	Impact
<p>A new validation process based on the EDTF standard is available for MARC date/time fields.</p>	<ul style="list-style-type: none"> A new validation process based on the EDTF standard is available. Predefined fields are eligible for applying the new EDTF validation. The new validation process can be applied either when saving records or during the matching process. 	<p>Catalogers who need the EDTF standard applied to specific date/time fields can now utilize the new validation process for their institution's data.</p>

back to [Metadata and Linked Open Data Roadmap](#)



Work Search - Additional Enhancements

[Linked Open Data](#) theme

What's New	Highlights	Impact
Enhance the Work Search functionalities according to the user's needs.	<ul style="list-style-type: none"> Adding additional facets and quick links such as the subclass of the work. Adding additional facets according to early access feedback. 	The user can enjoy the advantages of cataloging in BIBFRAME and searching within the additional hierarchical level the ontology provides while having a simpler and quicker process for identifying Work records and the Instances linked to them and performing relevant actions.

back to [Metadata and Linked Open Data Roadmap](#)

Resource Management

Physical Holdings Staff Search – Enhanced UX



[Repository Search](#)
[Enhanced UX](#)

What's New	Highlights	Impact
The Physical Holdings Staff Search was updated with various improvements for better usability, performance, productivity, and overall user experience.	<ul style="list-style-type: none"> Ability to configure actions order according to user's preferences. Ability to configure sections order according to user's preferences. Ability to configure the information visible in search results. More information and actions available in items section. 	The user can now quickly find holdings and perform actions as needed.

Automatic Upload of Electronic Holdings - SAGE



Idea Exchange

What's New	Highlights	Impact
Upload Electronic Holdings from SAGE replaces the manual, multi-step workflow for managing SAGE holdings.	<ul style="list-style-type: none"> Customer-specific electronic holdings for SAGE content are activated automatically. The integration runs on a fixed schedule. 	Reduces manual work involved in activating and maintaining the library holdings of SAGE electronic resources.

Flexibility in the Definition of CZ Updates Behavior for New and Deleted Portfolios



Idea Exchange

What's New	Highlights	Impact
It is now possible to define separately different behaviors for new and deleted Community Zone portfolios.	<ul style="list-style-type: none"> Upon activation of a Community Zone service, It is now possible to select whether to Delete portfolios removed from service automatically, separately from the Activate new portfolios associated with service automatically definition. This definition is considered during the Community Zone synchronization job. 	Better flexibility in the definition of Community Zone updates behavior. This eases the management of electronic collections.

User Preference for Physical Item Sort Routine



Idea Exchange

What's New	Highlights	Impact
Alma now remembers the user's selected sort routine in the physical items list.	When viewing the items list, the sorting does not default to Library/Location, but to the last sort routine selected by the user.	The user can easily scan the items list in the sort relevant for their needs, without having to reselect it each time.

Comprehensive Identifier Integration in Overlap Analysis



Idea Exchange

What's New	Highlights	Impact
Overlap Analysis tool now supports comparison using multiple identifiers types.	<ul style="list-style-type: none"> It is now possible to select multiple match methods and the order in which they will be used. The report includes information on the matched identifier type and its value. 	Enhanced overlap analysis features facilitates decision-making in purchasing.

back to [Resource Management Roadmap](#)

Display Logic Rules - Shared Network Zone Choices in Institution Zone



Idea Exchange

What's New	Highlights	Impact
Network members are able to create Display Logic rules with a combination of e-resources managed centrally and locally, coming from the Network Zone and from the local institution.	When configuring a Display logic rule in a consortia member, it is possible to choose Network Zone electronic collections as part of the rule criteria.	Better usability of electronic resources activated at both levels improves the consortia's management of electronic resources.

Back to [Resource Management Roadmap](#)

Automated Bibliographic Record Suppression



CERV Enhancement (ID #8182)

What's New	Highlights	Impact
<p>It is now possible to automatically suppress bibliographic records from PrimoVE, in case they do not have available inventory and do not have relations.</p> <p>This behavior is optional.</p>	<ul style="list-style-type: none"> Titles without available inventory will not appear in PrimoVE search. Inactive portfolios are considered "no available inventory". If the bibliographic record is part of a relation, it will not be automatically suppressed. This is the situation regardless of the "Suppress" status that appears as an eye icon in Alma or the workflow which deleted/deactivated the inventory. 	A streamlined process for suppressing bibliographic records when there is no available inventory ensures that patrons are offered with available resources in discovery.

back to [Resource Management Roadmap](#)

Acquisitions

Compliance with COUNTER 5.1

What's New	Highlights	Impact
Alma now supports COUNTER 5.1 reports in the various usage workflows.	<ul style="list-style-type: none">• It is possible to create vendor SUSHI accounts for R5.1.• Alma harvests the various report types.• Relevant information is available in Analytics.	Enables institutions to compare and analyze usage data effectively according to the latest COUNTER data release.

Ability to Change PO Line Type to a Different Inventory and Continuity



CERV Enhancement (ID #8861)

What's New	Highlights	Impact
The "Update PO lines information - advanced" job now supports changing PO line types across inventory and continuity.	<ul style="list-style-type: none">• It is possible to change PO line types from one time to continuous, from physical to electronic, etc.• It is possible to define how to handle the existing inventory and whether to create new inventory.	The ability to update existing PO lines across inventory and continuity simplifies PO line management and eliminate the need to delete and recreate them for significant changes.

Changes in Bibliographic Records are Automatically Reflected in PO Lines



Idea Exchange

What's New	Highlights	Impact
Changes in bibliographic records can be automatically reflected in the corresponding PO lines.	<ul style="list-style-type: none">• PO line descriptive information is updated when the corresponding bibliographic record is updated in any workflow.• This behavior is optional.	Accurate PO line descriptive information eases the management of PO lines.

Fulfillment and Resource Sharing

Manage Patron Services Screen – New UI is Default

What's New	Highlights	Impact
New Patron Services User Interface	In this phase of the UX rollout, the new UX is the only usable UX.	Quicker and more effective work at the circulation desk, using a cleaner and improved personalized Patron Services page.

Back to [Fulfillment & Resource Sharing Roadmap](#)

Toggle Item "Missing" Status of Non-Available Items



CERV Enhancement (ID #8918)

What's New	Highlights	Impact
An option to toggle "Missing" status is available even if the item is currently not available.	The option to toggle "Missing" status is available from the items search result and the items list even if the item is currently not available.	Easier and more efficient missing status toggling.

Back to [Fulfillment & Resource Sharing Roadmap](#)

User Management: Enhanced Users Search with Relative Date Operators



Idea Exchange

What's New	Highlights	Impact
Introducing new relative date search operators for key date-related search indexes, enabling users to perform more dynamic and flexible searches based on time ranges.	New user search relative-date operators: <ul style="list-style-type: none">◦ "Is Within the Last (days)"	This enhancement provides greater flexibility in search capabilities, enabling users to efficiently filter and retrieve records based on relative timeframes. The introduction of relative date operators simplifies complex queries and improves workflow efficiency for managing time-based data.

What's New	Highlights	Impact
	<ul style="list-style-type: none"> ◦ "Is Older Than (days)" ◦ "Is Within the Next (days)" • Users can input a numeric value to define the time range (where 1 represents "today"). • Enables the creation of "moving-wall" Users sets to facilitate ongoing data management. 	

Back to [Fulfillment & Resource Sharing Roadmap](#)

User Management: Update the Last Activity Date at the Login

What's New	Highlights	Impact
<p>The last activity date is updated whenever a user logs into Primo or Alma, regardless of the login method used.</p>	<ul style="list-style-type: none"> • Comprehensive Tracking: Updating the last activity date for all login methods, including institutional identity providers, social logins, and Ex Libris Identity Service. • Broad compatibility: supports LDAP, SAML, CAS, OpenID Connect, Google, Facebook, and email-based logins. • Improved Reporting: Enables accurate reporting on user activity for better account management. 	<p>This enhancement allows libraries to accurately identify active patrons based on recent login activity, facilitating more effective user account management and purging of inactive accounts.</p>

Back to [Fulfillment & Resource Sharing Roadmap](#)

User Experience, Accessibility, and Infrastructure

Accessibility: Annual Conformance Report (VPAT)

What's New	Highlights	Impact
<p>An updated Conformance Report on the newest compliance with WCAG 2.1 Levels A and AA, covering the current and new layout.</p>	<ul style="list-style-type: none"> • A new Conformance Report for WCAG 2.1 based on a third-party leading accessibility company audit. • Update compliance after enhancements. • Report on existing exceptions. • Covers the new layout. 	<ul style="list-style-type: none"> • Transparency regarding accessibility compliance. • Easier to use by individuals with disabilities.

Enhanced Multiple Facet Save Management on Manage Sets Page

What's New	Highlights	Impact
<p>Users can save multiple combinations of facets under different names on the Manage Sets page. This enhancement simplifies facet management by allowing users to quickly access their preferred facet configurations.</p>	<ul style="list-style-type: none"> • Save multiple facet combinations with unique names for easy retrieval. • Access saved facets via the new "Saved" drop-down list. • Utilize new "Save" and "Save As" buttons for improved facet management. • Remove saved facets using the new recycle bin icon. • Set default facets when saving new combinations using the "Set as Default" checkbox. 	<p>This feature empowers users with greater flexibility and efficiency in managing facets, reducing the time spent on repetitive filtering tasks. By providing easy access to customized facet configurations, users can streamline their workflows and enhance their overall experience.</p>

Configurable Session Timeout



What's New	Highlights	Impact
<p>Institutions can configure Alma's session timeout duration, allowing greater flexibility for staff who require longer active sessions. Administrators can set institution-wide defaults and enable user-level overrides to suit individual needs.</p>	<ul style="list-style-type: none"> • Additional session timeout configuration options was introduced (15, 30, 60, 90, 120 minutes. Default remains 60 minutes). • Institution-wide configuration via a new "Session Timeout" page. • The option for administrators to allow users to override the institution's default settings makes this option visible for user-level customization under "User Details". 	<p>This enhancement provides institutions with greater control over session durations, improving staff efficiency by reducing frequent logins while maintaining security. Institutions can tailor the session timeout to meet operational needs, ensuring a better user experience.</p>



AI Knowledge Assistant in Alma

What's New	Highlights	Impact
<p>The AI-powered Online Help Knowledge Assistant was embedded directly in Alma, enabling users to access instant, natural-language responses to documentation-related queries without leaving the platform.</p>	<ul style="list-style-type: none"> • Seamless integration with Alma for quick access to documentation information assistance. • AI-powered responses to natural language queries, enhancing user efficiency. • New and easy access points from the Alma UI. • Opens in a right-side panel similar to "Recent Entities" with an option to pin for continuous use. 	<p>This enhancement empowers Alma users with immediate access to relevant documentation, streamlining workflows and improving overall efficiency. The intuitive AI assistant minimizes search time, ensuring users can focus on core tasks with greater ease.</p>

Alma Analytics

Additional Local Fields for Holdings Records

What's New	Highlights	Impact
It is possible to include 30 customizable Holdings fields in Analytics reports.	Enhanced reporting options for Physical inventory by leveraging more data fields.	Libraries have richer data analysis possibilities for their physical resource management needs.

"General Notes" for Electronic Collections, Services, and Portfolios



Idea Exchange

What's New	Highlights	Impact
It is possible to generate a report that includes the General Notes for Electronic Collections, Services, and Portfolios	Allows libraries to extract useful information for their electronic resources stored in the General Notes fields.	This provides greater clarity for electronic resource management, and makes the General Notes easily accessible.

Compliance with COUNTER 5.1

What's New	Highlights	Impact
Alma now supports COUNTER 5.1 reports in the various usage workflows.	<ul style="list-style-type: none">• It is possible to create vendor SUSHI accounts for R5.1• Alma harvests the various report types.• Relevant information is available in Analytics.	Enables institutions to compare and analyze usage data effectively according to the latest COUNTER data release.

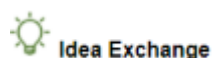
Collection Development - Record Distribution by Language, Publication Place and Classifications

What's New	Highlights	Impact
Out-of-the-box Data Visualizations focusing on identifying gaps in key metrics such as the languages of the titles, countries of publication and Classifications.	<ul style="list-style-type: none"> Identifying gaps for more balanced and diverse collections Evaluating how well the library holdings support various fields of study and research interests 	These insights aid in strategic planning for a well-balanced and impactful collection.

Collection Development - Consortia Central Office Shared Print Insight Dashboard

What's New	Highlights	Impact
An out-of-the-box Data Visualization focusing on identifying single copies based on various criteria to support deselection ("weeding") at the consortia level. This dashboard is one of several dashboards designed to support collection development.	<ul style="list-style-type: none"> Out-of-the-box data visualization project. Useful insights to help consortia identify potential physical inventory for retention and space reclamation. 	Provides consortia with an overview of the collections held by their members for efficient collection management at the consortia level

Invoice Notes in Reports



What's New	Highlights	Impact
It is possible to generate a report based on the invoice note field.	Allow acquisitions departments to extract useful invoice data that may be unique to their institution.	Enhance acquisition workflows by enabling libraries to easily extract and analyze unique invoice data and improve financial tracking.

Consortia

Central Configuration Dashboard - New added services and options

What's New	Highlights	Impact
The consortia central office has more centralized operational	New options and services to the new Central Configuration Dashboard:	The central office has more tools to work more efficiently,

What's New	Highlights	Impact
<p>policies in the new Central Configuration Dashboard.</p>	<ul style="list-style-type: none"> • Managing opening hours and distributing calendar information from the Central Configuration Dashboard to the members. • New notification letter at Network Zone level to inform the relevant administrators of the member institutions when a new distribution is run at the Network Zone level from the Central Configuration Dashboard. • Management of General Electronic Services configurations from the Central Configuration Dashboard. • Option for Members to request release of "Imposed" Mode • Hide configuration links for Code and Mapping tables in the Alma Configuration Menu at Network Zone level • Redirect Old menu Links to New Central Configuration Dashboard 	<p>reducing time spent applying central policies.</p>

Add Network Zone Titles to Alma Collections



Idea Exchange

What's New	Highlights	Impact
<p>Network Members, at their Institution Zone level, can search both Institution Zone titles and Network Zone titles while creating their Alma Collections, and are now able to add Network Zone titles to a collection.</p>	<p>Member institutions can add both Institution Zone titles and Network Zone titles to their Alma Collections.</p>	<p>Members can have access to all their titles (locally and centrally managed) in their collections.</p>