

## Searching by ADM Number in Circulation Module

- **Article Type:** General
- **Product:** Aleph
- **Product Version:** 21, 22, 23, 24

### Description:

There are a number of instances where the bibliographic doc number and the ADM system number are different. I cannot find anywhere within the Circulation module where one can search on the ADM number.

### Resolution:

1. Create a file

`./xxx50/tab/pc_tab_scar.LNG`

with the following contents

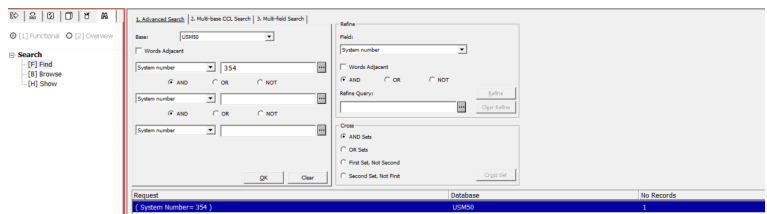
```
!!--!!!!!!!!!!!!!!!!!!!!!!!!!!!!!!-!-!!!!!!!!!!!!!!!!!!!!!!!!!!!!!!!!!!!!!!-!!!!!!
FI XXX50                               L System number                               SYS
```

xxx50 in col. 2 represents your ADM library

2. check, if file of type `pc_tab_short.LNG` is present in `./xxx50/tab/`

If missing, copy from `./xxx01/tab/`

3. Restart the PC-Server (util W/3/3)



- **Article last edited:** 19-Dec-2022