

Primo VE December 2017 Release Notes

Session Timeout Improvements

This enhancement adds the ability to configure session timeouts at the view level for guest and signed in users (0 indicates no timeout) and also includes the following changes related to session timeouts:

- Guest users - When a session times out, the system clears all personal parameters (such as saved searches) and refresh the page, leaving the user within the context of the page.
- Signed-in users - When a session times out, the system clears all personal parameters, signs the user out, and refreshes the page, leaving the user within the context of the page.

Configuration Options

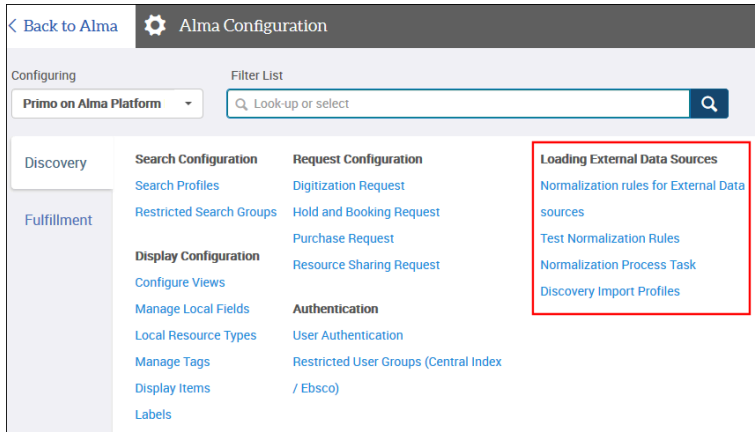
To support this functionality, the following parameters have been added to the General tab on the View Configuration page (**Discovery > Display Configuration > Configure Views**): **Timeout (in minutes) for guest users** and **Timeout (in minutes) for signed in users**.

The screenshot shows the 'View Configuration' page for 'PRIMO_OAP_INST:MyInst'. The 'General' tab is selected. Under 'Define View', the Code is 'PRIMO_OAP_INST:MyInst' and the Name is 'MyInst'. The Description is 'View for MyInst'. Under 'General Attributes', the 'Timeout (in minutes) for signed in users' is set to 30, and the 'Timeout (in minutes) for guest users' is set to 0. Other settings include 'Time-out URL', 'Default Language' (English), 'Side bar (Tweak my results) position' (On the right), 'Auto Complete Enabled' (checked), 'Enable Collection Discovery' (checked), and 'Enable the Personalize Your Results service' (unchecked).

View Configuration - General Tab

Improved Workflow for Loading External Records

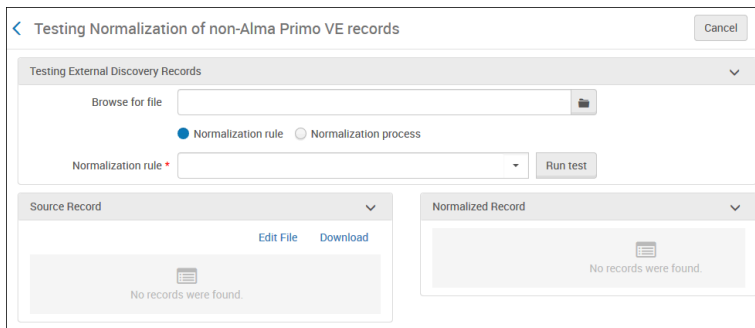
This enhancement improves the workflow of loading records from external data sources by consolidating the necessary links under a new section called Loading External Data Sources. For more details on loading external records, see [Loading Records from External Sources into Primo VE](#).



New Loading External Data Sources Section

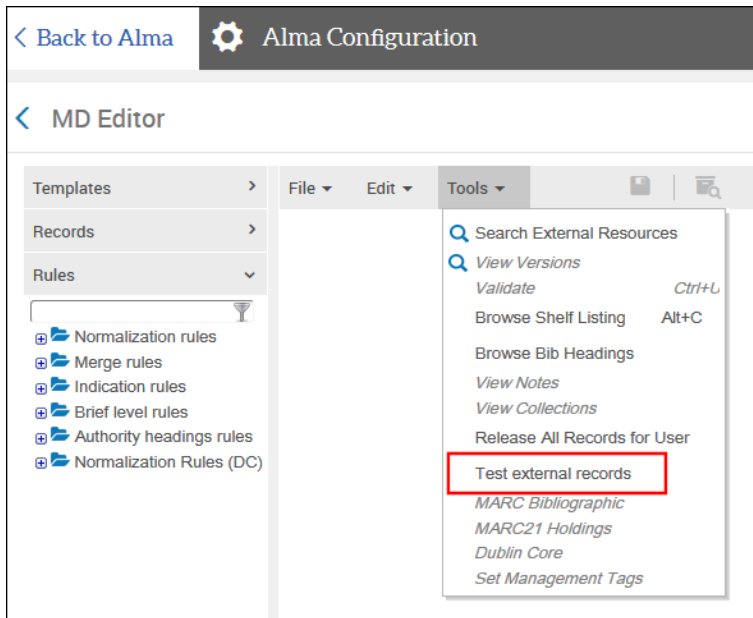
Testing Normalization Rules

This enhancement allows you to test your normalization rules prior to loading Dublin Core (DC) records from external data sources. To support this functionality, a link to the new Testing Normalization of non-Alma Primo VE Records page has been added to the Loading External Data Sources section on the Discovery configuration menu. For more information, see [Testing Normalization Rules for External Data Sources](#).



Testing Normalization of Non-Alma Primo VE Records Page (New)

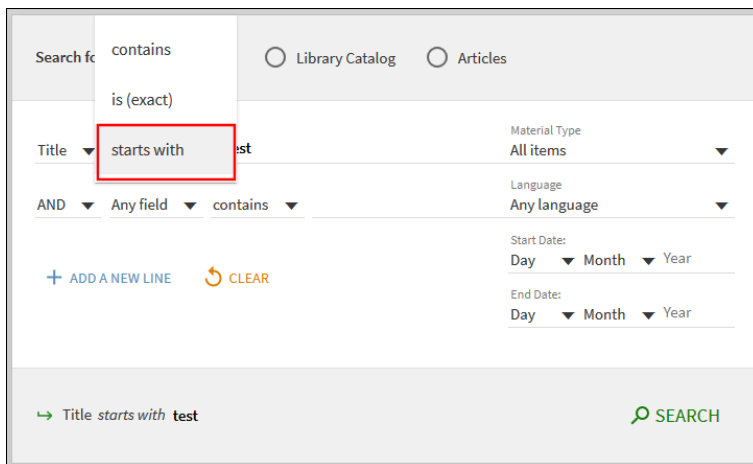
In addition, users can access the above page from the Metadata Editor (**Configuration Menu > Discovery > Loading External Data Sources > Normalization Rules for External Data Sources**) by selecting **Tools > Test external records**:



Test External Records from MD Editor

Starts with Option in Advanced Searches

The Advanced Search functionality has been improved by adding the **Starts with** option, which allows users to limit searches for titles that start with a specified word or phrase.



Starts with Option in Advanced Searches

Additional Granularity for Source Field in Full Details

This enhancement modifies the behavior of the display/source field so that it differentiates between records that are managed in Alma and records that are loaded into Primo VE via external data sources. Records managed in Alma will display **Library Catalog**, and records that are loaded from external sources will display the import profile name.

Details	
Title	Global warming : understanding the forecast
Creator	Archer, David, 1960- >
Subject	Global warming > Global temperature changes > Greenhouse effect, Atmospheric > Global warming -- Political aspects > Global warming -- Economic aspects >
Publisher	Malden, MA : Blackwell Pub.
Creation Date	2007
Format	194 p., [4] p. of plates : ill. (some col.), maps (some col.) ; 25 cm.
Source	Library Catalog

Example of a Local Alma Record

Note

Records from Primo Central, WorldCat, and EBSCO will continue to display the specific collection name of the record.

Upload UI Logo

This enhancement allows you to upload a clickable logo without having to edit and upload the entire customization package. To support this functionality, the Upload Logo section has been added to the Manage Customization Package tab on the View Configuration page ([Discovery > Display Configuration > Configure Views](#)).

The screenshot shows the 'View Configuration' page for 'PRIMO_OAP_INST:MyInst'. The 'View Name' is 'MyInst'. There are tabs for 'General', 'Links Menu', 'Search Profile Slots', 'Advanced Search Configuration', 'Brief Results', and 'Brief Rec'. The 'Manage Customization Package' section is active, showing 'Download Package' and 'Upload Package' options. The 'Upload Logo' section is highlighted with a red border and contains the following fields:

- Upload Logo File:
- Logo Clickable URL:

Manage Customization Package Tab in View Configuration

Support Syndetics Unbound

This functionality integrates Syndetics Unbound, an online enrichment service, with Primo VE to showcase items and increase user engagement. When enabled, this information displays at the bottom of the record's full display in Primo VE. Before you get started, you must subscribe to the service to get a license ID for your institution.

Explore Syndetics Unbound

You May Also Like Reader Reviews Also Available As Tags

Awards

YOU MAY ALSO LIKE

SEE MORE GREAT RECOMMENDATIONS

READER REVIEWS

★★★★☆ Reviewed by 208 people [What do you think? Write your own review](#)

I first read this when I was about fifteen. "How boring!" I thought. "I want Lizzie Bennets, and Elinor Dashwoods! What is up with this homebound quietly-suffering Anne Elliot? I'm supposed to be interested in her? Pshaw." I re-read it when I was twenty-seven, Anne Elliot's age. To say I got it is putting it mildly. It is, in my opinion, the greatest novel Austen wrote, and one of the [\(read more\)](#)

Review by atheist_goat (LibraryThing)

I've been a Jane Austen fan for a long time. I've read her six completed novels and have loved all of them, but in very different ways. Pride and Prejudice and Sense and Sensibility introduced me to the brilliant author. They are beautiful odes to love conquering all and the huge blessing it is to have a sister you love, no matter how different you are. Their main characters are shaken [\(read more\)](#)

Review by bookworm12 (LibraryThing) ★★★★★

SEE MORE REVIEWS

ALSO AVAILABLE AS

Video

Syndetics Unbound Integration with Primo VE

Configuration Options

The following table describes the configuration options that support this functionality.

Syndetics Unbound Configuration

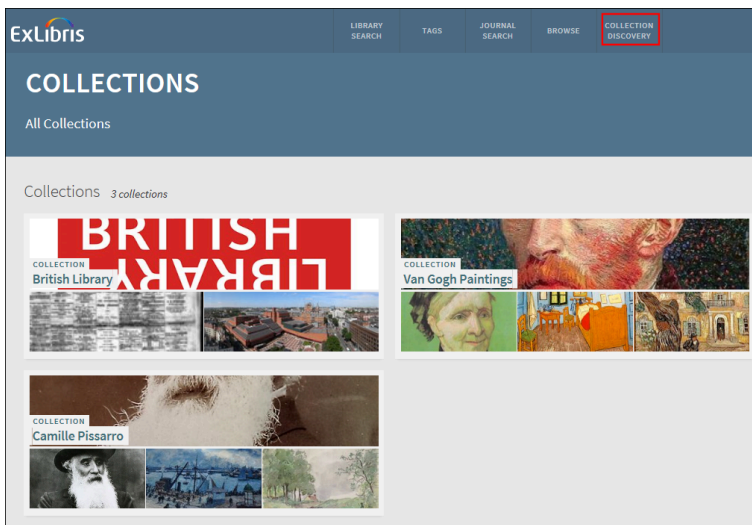
Element	Description
View Configuration - General Tab (modified)	After you add a license ID to the Discovery Customer Settings mapping table, the Enable Syndetics check box will appear in the General tab on the View Configuration page (Configuration Menu > Discovery > Display Configuration > Configure Views). Select this option, if you want Syndetics Unbound to appear in the Explore section of the record's full display.
Results Tile Labels code table (modified)	The following code has been added to this table to customize the label that displays for the service in the record's full display: <pre>nui.fulldisplay.SyndeticsUnbound - Syndetics Unbound</pre>
Discovery	Enter the license ID for Syndetics Unbound in the new Syndetics_Unbound_Customer_ID parameter to enable this

Element	Description
Customer Settings mapping table (new)	functionality for your institution. You will not be able assign this feature per view until this parameter has been defined.

Collection Discovery

The Collection Discovery interface has been added to Primo VE to allow users to browse collections that are defined in Alma. For more information about Alma collections, see [Managing Collections](#).

The Collections Lobby page, which opens after clicking the Collection Discovery button in the Main Menu Bar, displays all top-level collections. For each collection, up to four images from the collection are displayed. The Collections Lobby appears as follows in Primo VE:

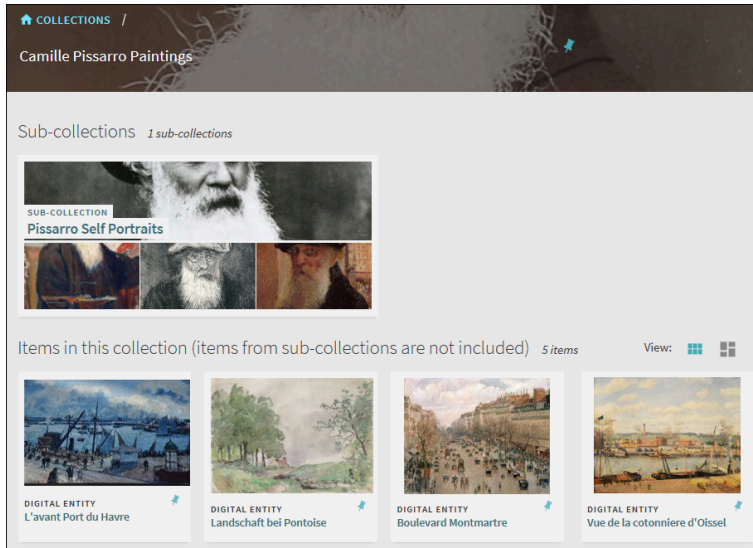


Collections Lobby in Primo VE

Clicking a collection opens the Collections page, which displays a collection's subcollections and items using either a grid (default) or gallery view (which hides the item's title). On the Collections page, users can perform the following operations:

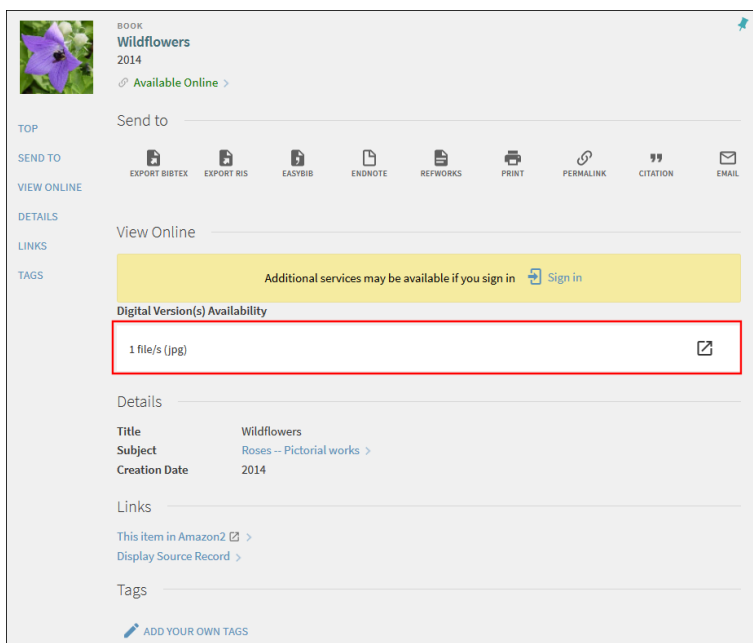
- Click a subcollection to open the subcollection's Collections page.
- Click an item to open the item's full display, which allows users to view the item's details and to open the item's digital representation in the browser.
- Click the Pin icon to save an item to My Favorites.
- Hover over an item to display its title (gallery view only).

The Collections page appears as follows in Primo VE:



Collections Page - Grid View

The item's full display page allows users open the the item's digital representation in the browser and to view the items details, and services.



Item's Full Display Page

Deep Links

Users can link directly to the Collections Lobby or Collections page using the following link format:

```
<Primo VE base URL>/discovery/
collectionDiscovery?vid=<inst_ID>:<view_ID>&collectionId=<collection_ID>&lang=<lang>
```

Examples:

- Collections Lobby: <https://primo-demo.exlibrisgroup.com/discovery/>

collectionDiscovery?vid=Alma&lang=en

- **Collections page:** <https://primo-demo.exlibrisgroup.com/discovery/collectionDiscovery?vid=Alma&collectionId=17579453&lang=en>

Configuration Options

The following table describes the configuration options that support this functionality.

Collection Discovery Configuration

Element	Description
View Configuration - General Tab (modified)	The Enable Collection Discovery check box has been added to enable this functionality at the view level.
Prima Collection Discovery code table (new)	This table defines the labels that are associated with the Collection Lobby and Collections pages.
View Configuration - Links Menu Tab (modified)	The CollectionDiscovery code has been added to define and enable the Collection Discovery link that displays in the Main menu. This code contains the following settings: <ul style="list-style-type: none">• Label – The label that displays for the link in the Main menu.• URL – The link to the Collection Lobby, which displays all collections for your institution: <code>/discovery/collectionDiscovery?vid=<View_Code></code>• Description – Optional text that describes this link for internal use.
View Labels code table (modified)	The following code was added to support the translation of the Collection Discovery link in the Main menu: <pre>mainmenu.label.CollectionDiscovery - Collection Discovery</pre>

Show PNX Record from UI

For use in Primo VE, the source records are stored in the Primo VE normalized XML format. From the UI, you can view a record in this format by adding the **&showPnx=true** parameter to the end of the record's full display URL. This is useful to understand what metadata is being used in Primo VE and why information appears in the results. PNX records include the following sections:

- **Control** – Formatted data that is used for control purposes.
- **Display** – Data that is displayed in the brief and full displays in the UI.
- **Search** – Metadata that is indexed for searching and faceted browsing in the UI.
- **Sort** – Sort fields that are used as the basis for sorting the results.
- **addata (additional data)** – Data elements that are required for a number of actions, such as pushing records to citation managers.

For example:

`https://my.alma.exlibrisgroup.com/discovery/fulldisplay?docid=alma991212850000541&context=L&vid=PRIMO_OAP_INST:MyInst&lang=en&search_scope=`

```
{
  "display": {
    "type": [ "book" ],
    "language": [ "eng" ],
    "title": [ "Interpreting psychological test data" ],
    "subject": [ "Personality assessment", "Bender-Gestalt Test", "Draw-A-Person Test", "Wechsler Adult Intelligence Scale", "Rorschach Test" ],
    "format": [ "v. ,24 cm." ],
    "identifier": [ "$SCLC$$V77020593,$$CIBN$$V0442253133" ],
    "creationdate": [ "1978-" ],
    "creator": [ "Gilbert, Joseph, 1920-$$QGilbert, Joseph" ],
    "publisher": [ "New York : Van Nostrand Reinhold Co." ],
    "mms": [ "991212850000541" ],
    "contents": [ "v. 1. Test response antecedent." ],
    "mesh": [ "Psychological Tests" ],
    "version": [ "1" ]
  },
  "control": {
    "sourcerecordid": [ "991212850000541" ],
    "recordid": [ "alma991212850000541" ],
    "sourceid": "alma",
    "originalsourceid": [ "30520-train20072_c2db" ],
    "sourcesystem": [ "ILS" ],
    "sourceformat": [ "MARC21" ],
    "score": [ "1.0" ]
  },
  "sort": {
    "title": [ "Interpreting psychological test data / Joseph Gilbert." ],
    "author": [ "Gilbert, Joseph, 1920-" ],
    "creationdate": [ "1977" ]
  }
}
```

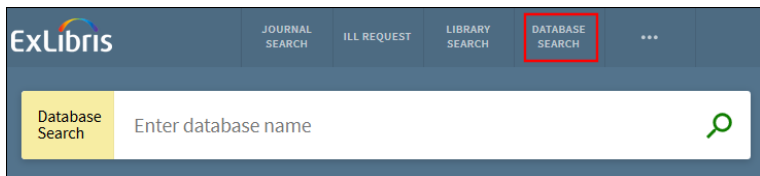
Sample Output for Record

Patron Self-Registration

This enhancement allows end users to utilize the self-registration capabilities of the various social login methods to self-register and access Primo VE. For more information, see [Social Login](#).

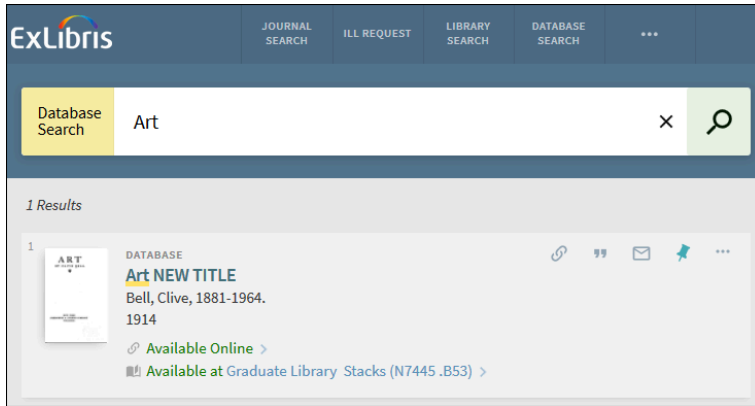
Database Search Interface

The new Database Search page allows users to search specifically for databases, and also includes auto-complete suggestions for databases enabled in Alma. Electronic Collections that are activated in Alma and include a URL will be included in the new Database search and will now be seen as resource type **Database** within the Primo VE search results.



Database Search

The number of results per page is 20 (not configurable), and each result contains the following information: resource type, thumbnail, title, creator, date, availability, and actions (such as Citation and Email).



Database Search Results Page

Configuration Options

The following table describes the configuration options that support this functionality.

Configuration Options for Database Search

Element	Description
Views Configuration - Links Menu tab (modified)	<p>The DatabaseSearch code has been added to define and enable the Database Search link that displays on the Main menu in Primo VE. This code contains the following settings:</p> <ul style="list-style-type: none"> • Label – The label that displays for the link in the Main menu: <code>Database Search</code> • URL – The link to the Database Search page, which displays all collections for your institution: <code>dbsearch</code> • Description – Optional text that describes this link for internal use.
Database Search Labels code table (modified)	<p>The following codes have been added to support the display labels associated with Database Search:</p> <ul style="list-style-type: none"> • <code>nui.databasesearch.title</code>: Database Search • <code>nui.databasesearch.searchbox.help</code>: Enter database name
View Labels code table (modified)	<p>The following codes have been added to support the display labels associated with Database Search in the Main menu:</p> <ul style="list-style-type: none"> • <code>mainmenu.label.databasesearch</code>: Database Search • <code>nui.mainmenu.description.databasesearch</code>: Database Search

Display Virtual Browse on the Services Page

This enhancement extends the Virtual Browse service from the Full Display page to the Services page, allowing access from third-party discovery systems (such as Google Scholar). As long as Virtual Browse is already configured for the view, no additional configuration is necessary. For more information, see [Configuring the Full Display page](#).

Removal of Government Document Resource Type

Previously, records cataloged in Alma with 008(28) = a, c, f, i, l, m, o, s, OR z AND Leader(06) = a AND 26x\$b that did not contain 'University Press' or 'University of ___ Press' were defined as the **Government Document** resource type in Primo VE.

Following the feedback that we received from customers that the above rule was too granular and not always correct, we decided to remove it. Records will now be calculated based on the other cataloging definitions and will no longer be seen as government documents, but will appear as journals, books, and so forth as per their MARC cataloging.

Resolved Issues

The following issue was resolved in this release:

(URM-80758) The **Not Available** calculated availability status was misspelled. This has been fixed.

Next Month Sneak Peek

- Dedup/frbr analysis utility – Allows the Primo VE administrator to test and determine why records did not merge as dedup or frbr groups.
- Further additions to the external data source workflow – Includes the ability to specify external data sources in search scopes, and the ability to delete external data sources.