

February 2018

Note

All customers beta/dev apps (referred to as Sandbox Apps going forward) will be moved to the latest version on the 15th January 2018 as part of campusM's move to Monthly Releases. Hockey App builds for the native apps will be made available during the week commencing 15th January 2018. This version will be available to deploy to live from the 5th February 2018.

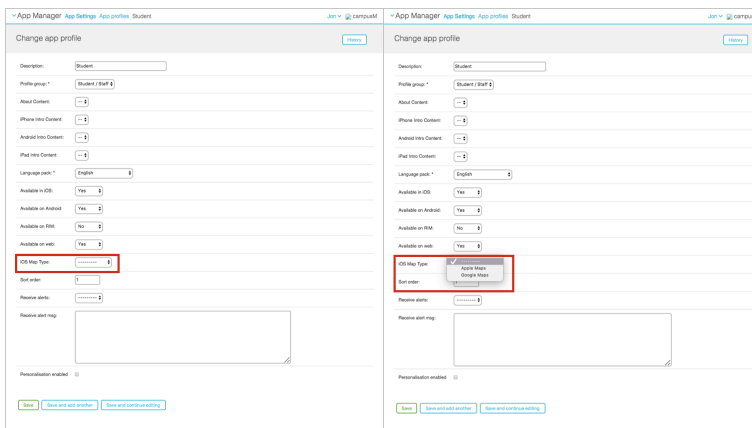
New Features

Enabling Google Maps within the campusM iOS App

Given the differing levels of detail and functionality available within Google and Apple maps depending on geographical location, we have enabled the Google Maps SDK within the campusM iOS App, allowing institutions or end-users to select their preferred mapping technology.

For the institution:

Institutions can choose which mapping technology is used by the iOS app, selecting either Apple or Google Maps. By default, this is set as Apple Maps, but customers can configure this directly within the app manager at a profile level. The configuration can be found within: App Settings > App Profiles > Change App Profile:



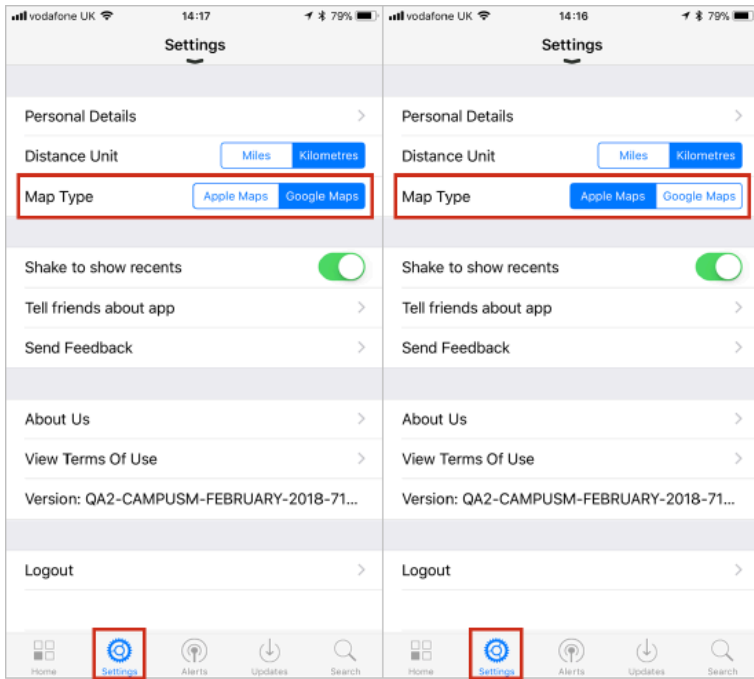
Note

You must publish the changes from the App Manager to become effective.
End-users have the ability to override the default within the settings on their campusM App (see below).

For end-users:

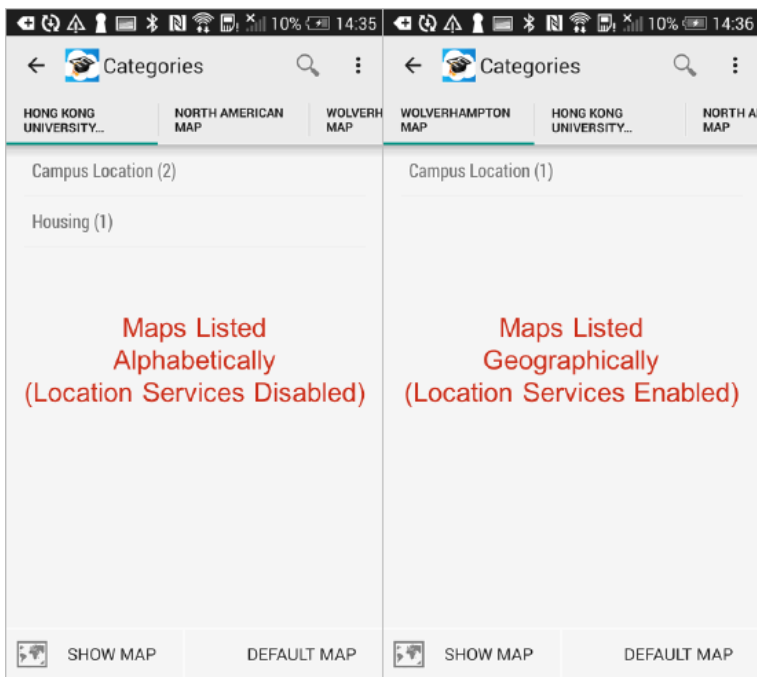
Following established practice, we have enabled campusM end-users to select their preferred mapping technology (Apple

or Google Maps) within the setting of the campusM app:



Enabled Location-Sensitive Map lists in the campusM iOS and Android apps

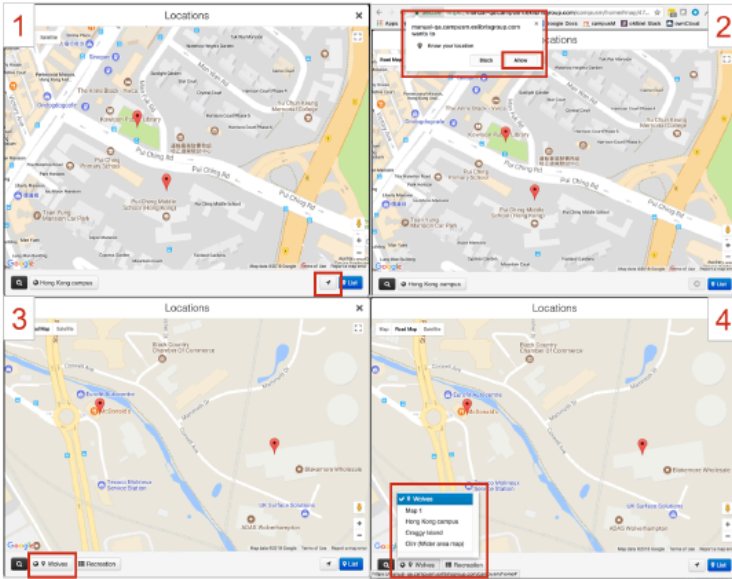
With many institutions having multiple campuses, both nationally and internationally, we have made the campus Map lists location sensitive, with the map corresponding to an end-user's current location shown first, and subsequent maps defined by the sort order within campusM App Manager.



Enabled Location-Sensitive Map lists in the campusM Web app

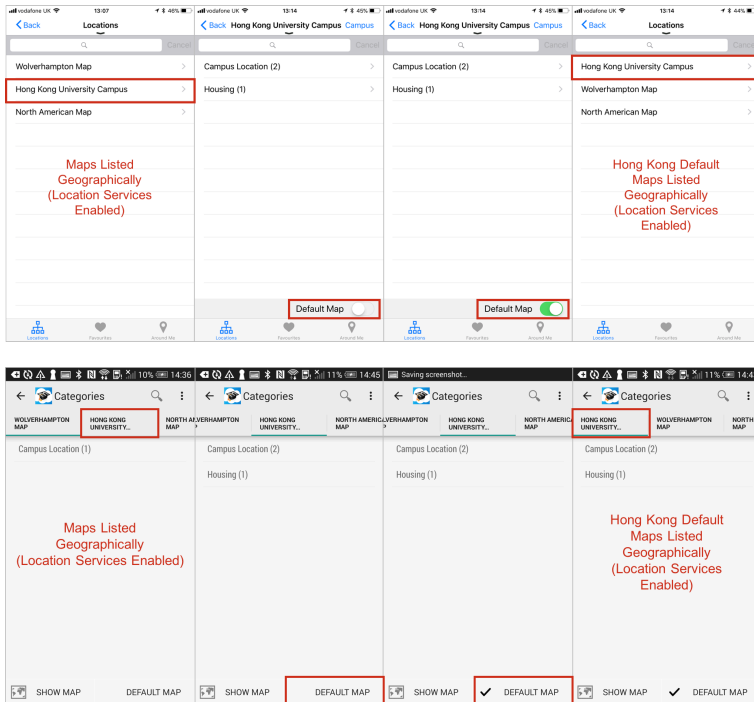
With many institutions having multiple campus, both nationally and internationally, we have enabled end-users to be able to

pick up their current location within the browser and show the map associated with their current position.



Enabled end-users to define their own default campus map within the campusM iOS and Android apps

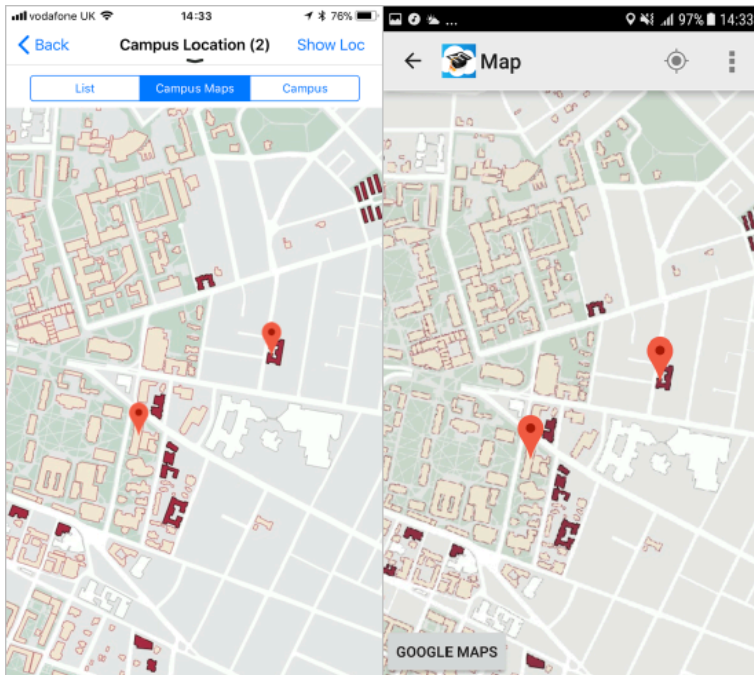
End-users have the ability to identify a particular campus map as their default map, if more than one map is presented in campusM. This orders the selected campus map at the top of the map list, regardless of the end-user's actual geographical location or any sort order set within App Manager:



Modified the default Position marker to be consistent between campusM iOS and Android apps

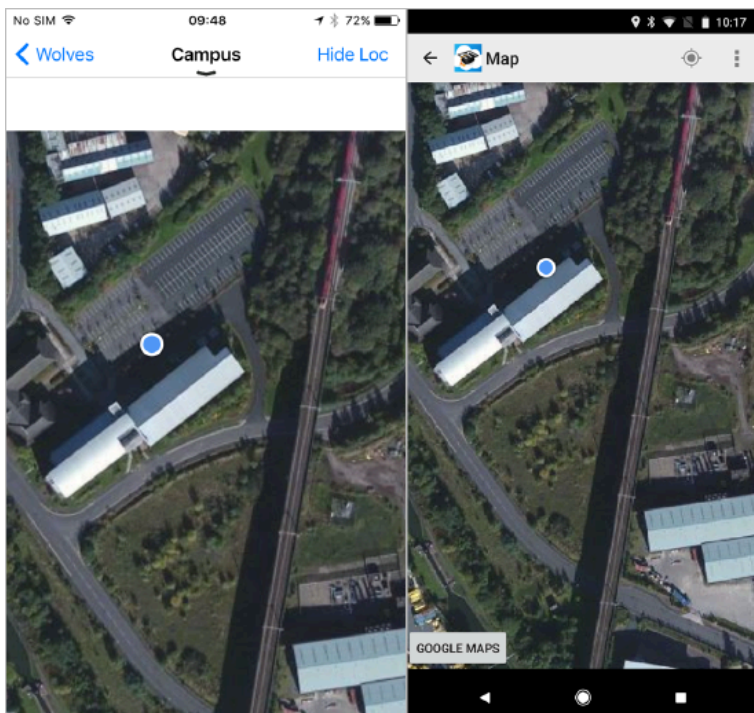
The default position marker for positions within the campus maps have been changed and made consistent between

campusM iOS and Android apps.



Modified the Show Location marker to be consistent between campusM iOS and Android apps

The Show Location marker that indicates the end-user's current location within the campus maps has been changed and made consistent between campusM iOS and Android apps



Product Fixes

Product Issue	Affected Platform(s)	Salesforce Case(s)
Resolved an issue that resulted in the app crashing when a large number of Alerts were selected and then deleted.	<ul style="list-style-type: none"> iOS App 	<ul style="list-style-type: none"> 00470967 00417158
Resolved a constraint issue which prevented the notification delete button from showing on some devices.	<ul style="list-style-type: none"> iOS App 	<ul style="list-style-type: none"> 00492431 00497930 00504923
Resolved an issue that prevented the image and notes field for a position from being displayed if no notes were applied against that position.	<ul style="list-style-type: none"> Android App 	<ul style="list-style-type: none"> N/A
Ensured that the location searching is consistent on Android and iOS apps. This includes searching the following fields: Description; Notes; Location Category; Location reference; Post Code; County; Town; District; Street Name; House Name; Flat.	<ul style="list-style-type: none"> iOS App Android App 	<ul style="list-style-type: none"> 00352049
Resolved an issue where the Hover Background Color and Hover Text Color tile properties were not applied correctly to customers with Homescreen with Personalization Available enabled.	<ul style="list-style-type: none"> Web App 	<ul style="list-style-type: none"> 00455691 00488814
Resolved an issue that displayed the position markers incorrectly on the preview map, as shown in Position's Detail screen.	<ul style="list-style-type: none"> Android App 	<ul style="list-style-type: none"> 00480234
Enhanced the position logic to deal with position markers on the very edge of the map.	<ul style="list-style-type: none"> Android App 	<ul style="list-style-type: none"> N/A
Resolved an issue with language pack translations not being applied correctly to the Location Category tab bar.	<ul style="list-style-type: none"> iOS App 	<ul style="list-style-type: none"> 00425854
Resolved an issue that prevented the custom Position pin images from being displayed on Campus Maps.	<ul style="list-style-type: none"> iOS App Android App 	<ul style="list-style-type: none"> 00315269
Resolved an issue that prevented the Directions > Google From Here option from passing the correct position information to Google Maps.	<ul style="list-style-type: none"> iOS App 	<ul style="list-style-type: none"> 00464872 00464899 00498672
Resolved an issue that cleared the Search box in Personalization when the reset button was initially clicked. This would occur regardless of whether the reset was actually confirmed or not.	<ul style="list-style-type: none"> Web 	<ul style="list-style-type: none"> N/A

Product Issue	Affected Platform(s)	Salesforce Case(s)
	<p>App</p> <ul style="list-style-type: none">• iOS App• Android App	