

---

## Pivot Profiles: Adding (or Changing) Your Pivot Profile Photo

- **Product:** Pivot
- 



### Adding or Changing a Pivot Profile Photo

Pivot allows you to upload an existing photo to add to your Pivot profile. Our built-in cropper lets you isolate exactly what you want to display in your profile.

---

### To add a photo to your Pivot profile:

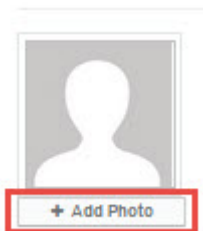
1. Navigate to your Pivot profile and click the **"Update your profile"** link. This will launch the profile editor.
2. Click **"Continue"** and then the **"Edit"** button to start editing.
3. Click **"Add photo"**.

---

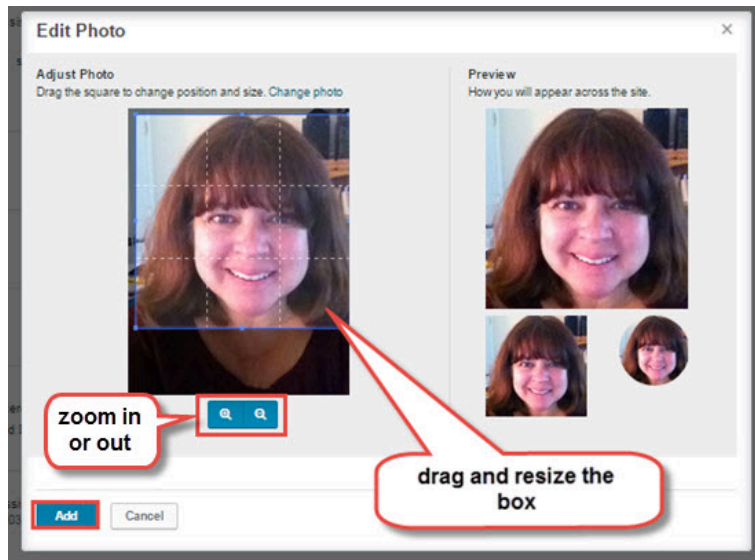
#### Note

Photos must be .jpg, .png., or .gif file and cannot be larger than 10 MB.

---



4. Click **"Choose photo"** to locate a photo on your computer, or drag and a drop a photo into the "drop a photo here" box.
5. The photo editor will display and allow you to crop your photo to your liking. You can drag or expand the crop box or zoom in or out. A preview of the selected area will display to the right.

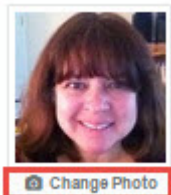


6. Click **"Add"** when you're ready to add your photo.

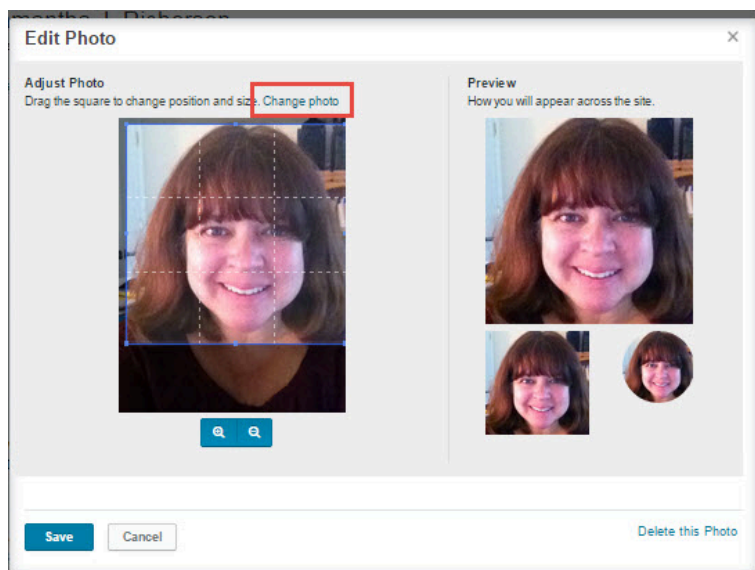
---

## To edit or change an existing photo:

1. Navigate to your Pivot profile and click the **"Update your profile"** link. This will launch the profile editor.
2. Click **"Continue"** and then the **"Edit"** button to start editing.
3. Click **"Change photo"**.



4. The photo editor will display. Click **"Change Photo"** to continue.



5. Click "**Choose photo**" to locate a photo on your computer, or drag and drop a photo into the "**drop a photo here**" box.
- 

**Note**

Photos must be .jpg, .png., or .gif file and cannot be larger than 10 MB.

---

6. The photo editor will display and allow you to crop your photo to your liking. You can drag or expand the crop box or zoom in or out. A preview of the selected area will display to the right.
  7. Click "**Add**" when you're ready to add your photo.
- 

- **Article last edited:** 18-Mar-2015
- **Old Article Number:** 12532