

---

## Outlook 365

---

### Overview

Outlook 365 product integration integrates campusM with Microsoft Outlook 365 and allows users to manage their email accounts directly from campusM.

---

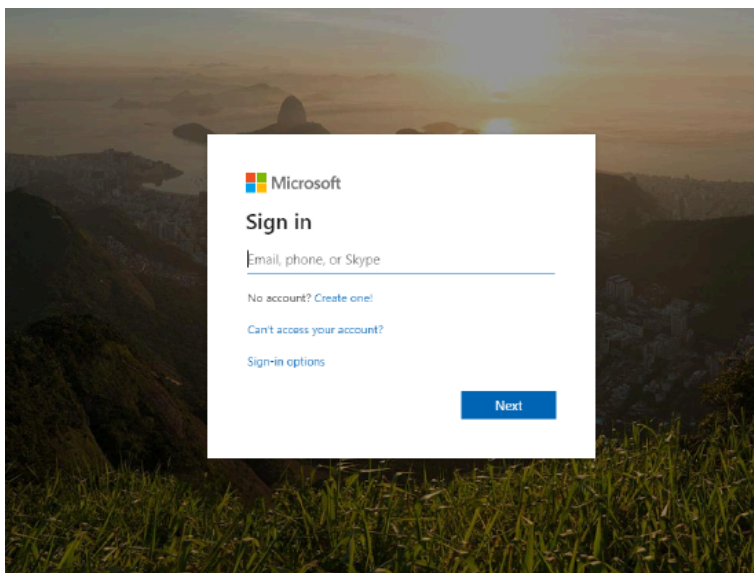
### User Experience

The following section describes aspects of the user experience.

---

### Logging In to Microsoft

The first time a user selects the Outlook tile, the Microsoft login page appears:



#### Microsoft Login Page

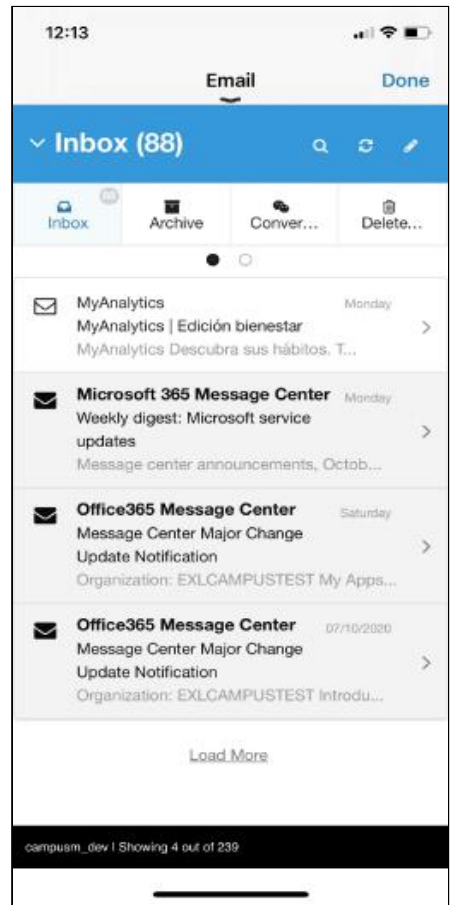
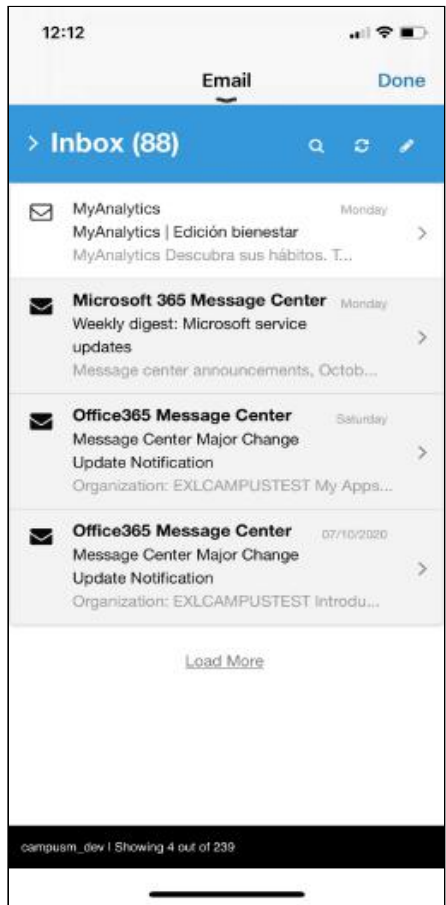
The user enters the institution's email address and password. After logging in, the user is redirected back to the Outlook main screen. There is no need to log in again to Microsoft if the user is still logged in to campusM.

---

### Screenshots

The following is an overview of the Outlook 365 product integration user interface for a reference when configuring it.

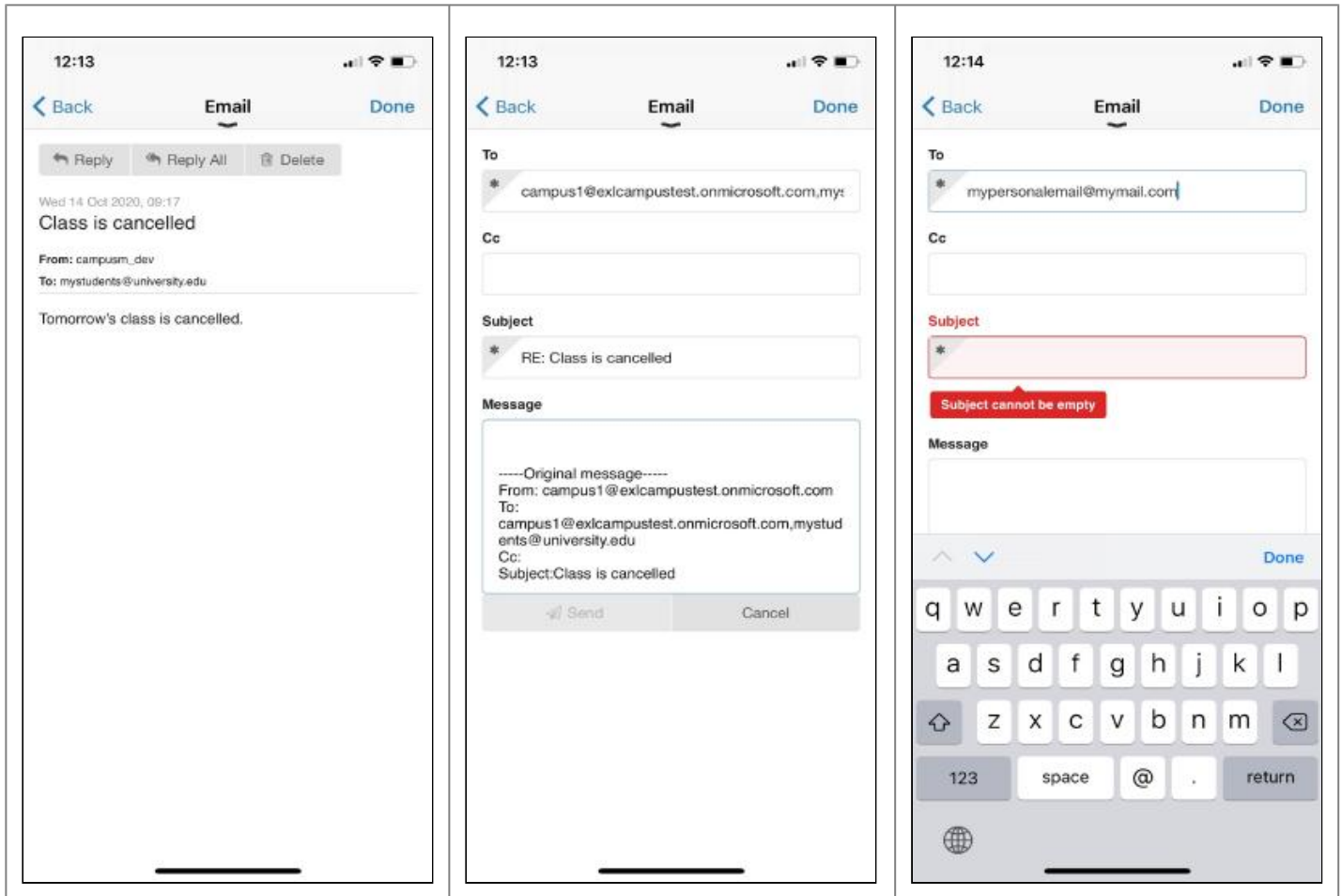
The Live Tile indicates number of unread emails	After selecting the <b>Outlook</b> tile, the user's Inbox appears:	Select the title bar to display the email boxes:
---	--	--



Select an email to open it:

Select **Reply** to reply to the sender:

Enter a subject in the Subject box:



## Live Tile

It is possible to use the live tile either with full product integration (OTB behavior) or with a linkout to an external website, app or any other tile. For more information, see [Configuring Live Tile Linking](#).

## Technical Overview

The following section describes technical information for the Outlook 365 product integration.

## Prerequisites

The following are the prerequisites for the Outlook 365 product integration:

- Configure an OAuth Integration Profile (**App Manager > App Settings> Integration Profile**). For more information, see [OAuth Integration Profile Configuration](#).
- Configure a redirect URI in the Azure settings > Authentication section. The Redirect URI should be the following:  
<App URL>/cmauth/oauth/callback.  
For example: <https://university.campusm.exlibrisgroup.com/cmauth/oauth/callback>
- Verify on the Azure side that permissions that are updated in campusM (see OAuth Scope in the [Configuration](#) section) are configured in Azure as well (Azure settings > API Permissions section).
- Configure Microsoft Graph API permissions. For more information, see [Microsoft Graph API Permissions and](#)

---

## Authentication

The following is the authentication workflow:

1. campusM sends Integration Profile information to Microsoft Login API.
2. Microsoft send a response with user's access token.
3. campusM sends the access token to Microsoft Graph API to get all relevant data for the logged in user.

When a customer implements this Product Integration with a Live Tile that takes the user out of campusM and opens Outlook in an external browser, campusM can only log the user out of the Outlook session if **Single Log Out (SLO)** is **enabled** in the customer's Identity Provider (IDP) and configured in campusM. If SLO is not enabled in this way, and a device is shared by multiple users, there is a risk that a campusM user may see the email account of the previous user rather than their own email in the browser. This can occur when user *A* selects the Outlook tile, reviews their email, and doesn't log out of the Outlook tab, and then user *B* logs into campusM from the same device, and selects their Outlook tile in campusM.

Enabling Single Log Out means that when a user logs out of campusM, a logout is initiated across all the users' sessions on all devices, which prevents sessions from overlapping on shared devices.

For further information on managing token-based authentication and Integration Profiles, see [Configuring Integration Profiles](#).

---

## Configuration

To configure the Outlook 365 Product Integration, first configure an authentication integration profile (subtype OAuth) that you then select in the Product Integration configuration section.

---

### OAuth Integration Profile Configuration

You add and edit integration profiles from **App Settings > Integration Profile > Add Integration Profile**.

The following table describes the configuration options available on this page. You can find most of the information in your Azure portal; under App registrations, Endpoints and Certificate and Secrets sections.

Configuration Option	Description
Type	Authentication
Subtype	OAuth
OAuth Client ID	The Application ID that the registration portal assigned your app.
OAuth Client	The application secret that you generated for your app in the app registration portal

Configuration Option	Description
Secret	
Authorization Endpoint	<code>https://login.microsoftonline.com/{tenant}/oauth2/v2.0/authorize</code>
Access Token Endpoint	<code>https://login.microsoftonline.com/{tenant}/oauth2/v2.0/token</code>
Token Endpoint Auth	Post
OAuth Scope	<p>A space-separated list of the Microsoft Graph permissions to which you want the user to consent. This can also include OpenID scopes. You need to have at least the following scopes: <code>offline_access user.read mail.read mail.send Mail.ReadWrite</code></p> <p>If you are using OpenID scopes, the following scopes are recommended for Outlook: <code>openid profile email</code></p>
Logout URL	<code>https://login.microsoftonline.com/{tenant}/oauth2/logout?client_id={OAuth Client ID}&amp;post_logout_redirect_uri={logout url}</code>
Extract OAuth Tokens	True
Username Mapping	<code>unique_name</code>
Mail Mapping	<code>upn</code>
First Name Mapping	<code>given_name</code>
Last Name Mapping	<code>family_name</code>

---

## Product Integration Configuration

To configure the Outlook 365 product integration, select **Product Integrations > Add Product Integration**.

Select **Outlook**. The following configuration page appears:

App Manager outlook

**Enable Product Integration**   
Check this box to enable events

**Enable Service**

**Service description**

**Product Integration description\***  
Description for this events instance

Text - "Outlook"

Look and Feel

- is a required property

Live Tile

Text - "Outlook"

Default: 'Outlook'

**Look and Feel**

**Primary Theme Color**  
 Default: '#444444'

**Secondary Theme Color**  
 Default: '#6f8ea4'

**Button Background Color**  
 optional

**Live Tile**

**Enabled**

**Badge Color**

**Update Rate**  
Frequency of updates to the unread count (in minutes)  
 Default: 1

**Text/Labels**  
Text/Labels for Outlook Screens

**Page Title**  
 Default: 'Outlook'

**View In**  
 Default: 'Open attachments in Outlook'

**Validation Error**  
 Default: 'Invalid format or string. Multiple recipients must be comma separated without spaces.'

**General**  
General settings for Outlook Screens

**Offset number of emails to be incremented at every load action**  
 Default: '4'

**Connection**  
Connection details for office365

**Integration Profile**  
 Search...

Save Cancel

## Configuring Outlook

The following table describes the configuration options available on this page.

Configuration Option	Description
Enable Product Integration	Select to enable the product integration on the user's campusM app.

Configuration Option	Description
Product Integration Description	A description of the product integration for internal use
Screen Title	The title that appears in the top header of the service
<b>Look and Feel</b>	
Primary Theme Color	Select a color for the main elements on the page
Secondary Theme Color	Select a color for the secondary elements on the page
Button Background Color	The background color of the buttons
<b>Live Tile</b>	
Enabled	Select to enable the number of unread emails indicator on the Outlook tile
Badge Color	The color of the badge indicator
Update Rate	Enter the frequency of updates to the unread count (in minutes)
<b>Text / Labels</b>	Enter replacement text for the default titles and labels
<b>General</b>	
Offset number of emails to be incremented at every load action	The number of emails displayed each time the user selects Load more
<b>Connection</b>	
Integration Profile	The integration profile campusM uses to integrate with Outlook 365. See the Authentications section above for more information.