

Moodle

Overview

The Moodle product integration allows students, lecturers, and other users to view their Moodle information, including course content and grades, on the campusM app.

Note

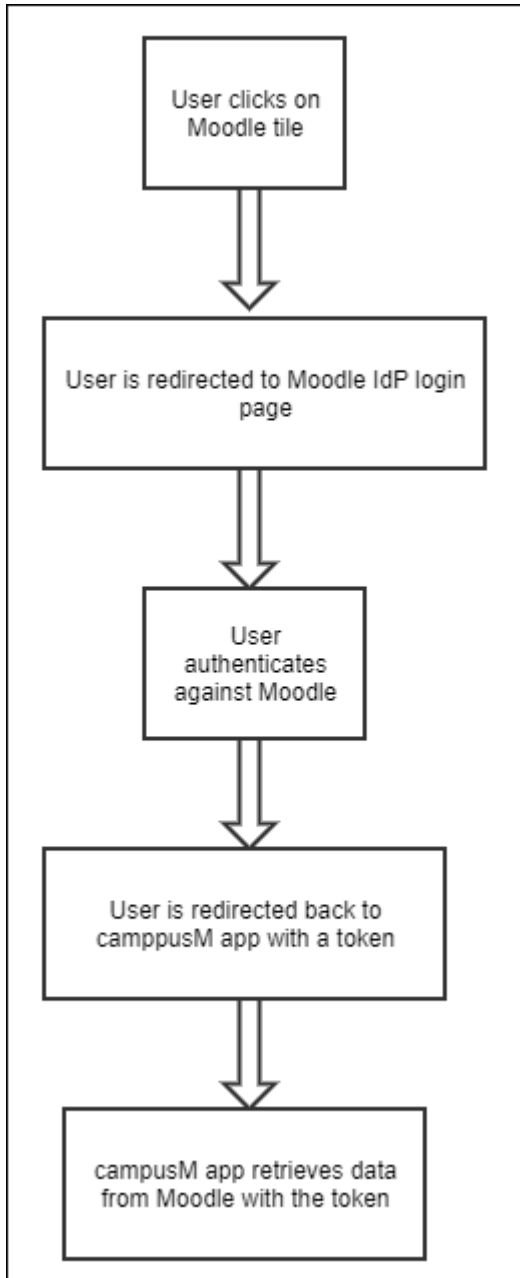
Due to Moodle authentication flow, Moodle product integration is currently supported only for native application and not for the web application. However, it is possible to configure a link to your institution's Moodle Website when using the web application. For more information, see [Moodle Web](#) in the Configuration section.

User Experience

The following section describes information relating to the user experience for the Moodle product integration.

User Workflow Diagram

The following diagram displays the user workflow:



User Workflow Diagram

Authentications

See the user [Workflow Diagram](#) for a description of the authentications process.

Offline Support

No offline support is available.

Moodle Live Tile

The Moodle produce integration offers two types of tiles that display on the homepage: live and static. The live tile displays

active information relating to your courses while the static tile has fixed information. For information on configuring the Moodle live tile, see [Live Tile](#) in the Configuration section.

The recommended size of the live tile is 2X3.

Note

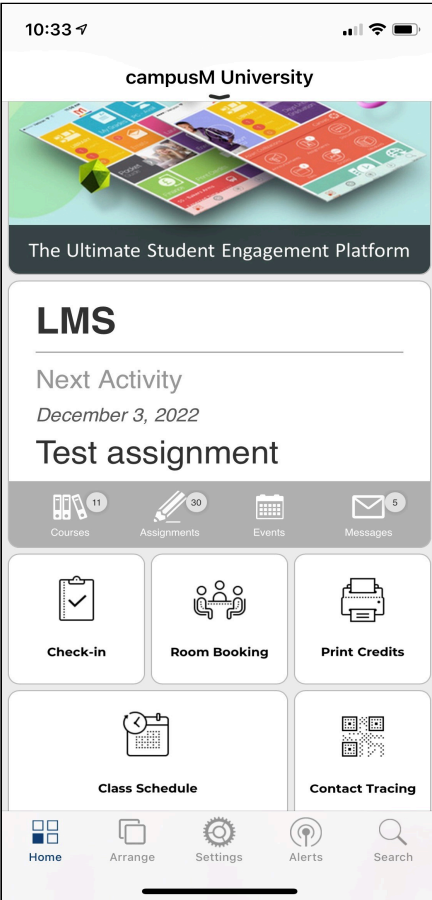
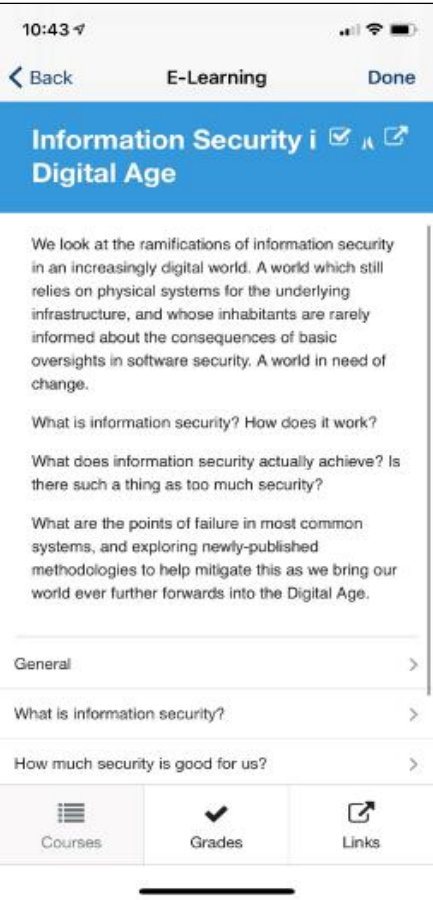
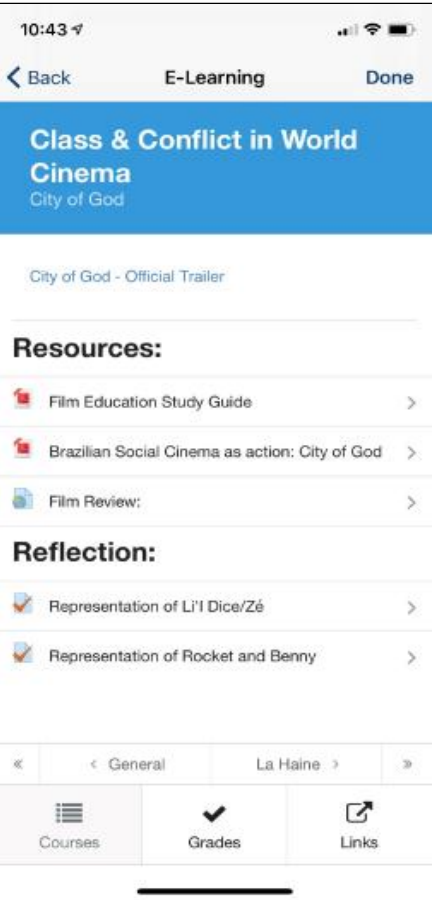
The Moodle Live Tile is not available for the web version.

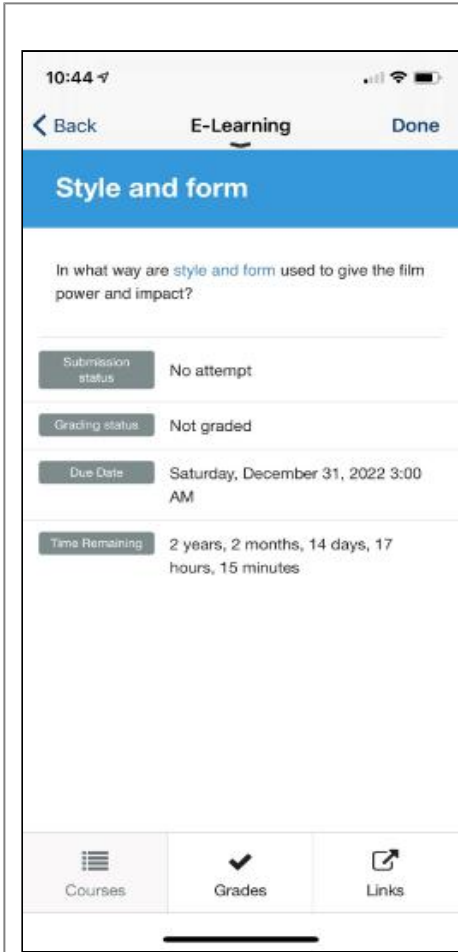
Note

It is possible to use the live tile either with full product integration (OTB behavior) or with a linkout to an external website, app, or any other tile. For more information, see [Configuring Live Tile Linking](#).

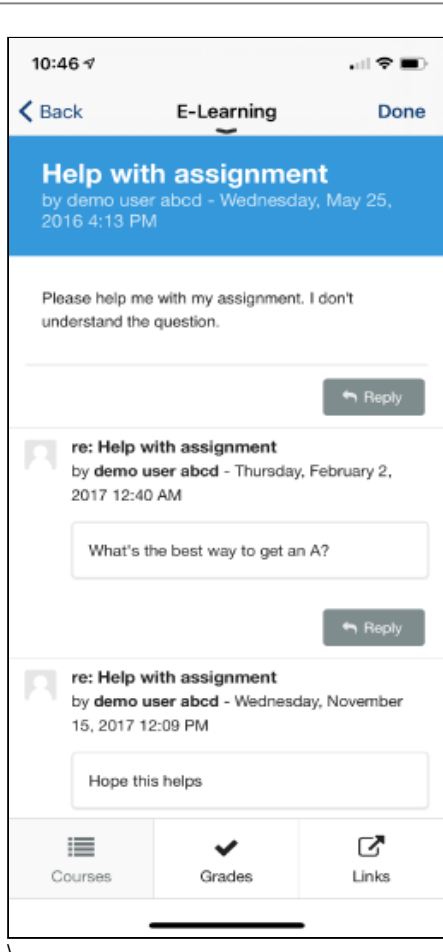
Screenshots

The following is an overview of the Moodle product integration user interface for a reference when configuring it.

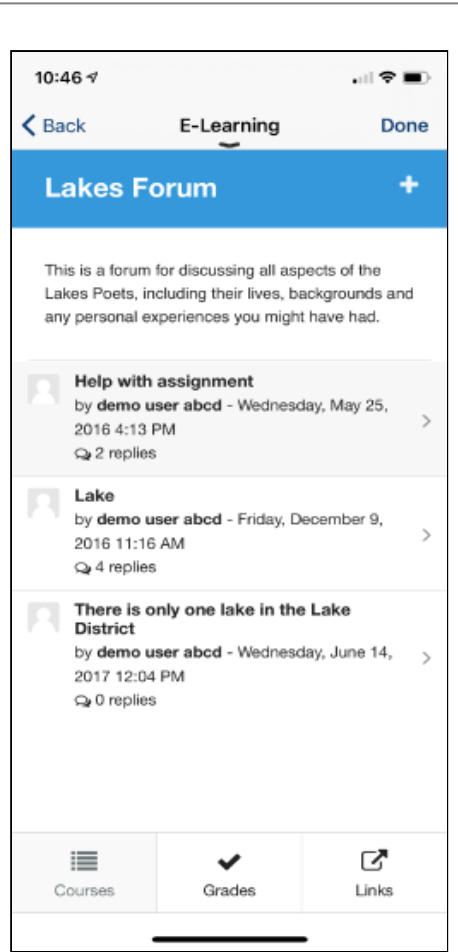
<p>The following is an example of the Moodle Live Tile that appears on your campusM homepage</p>	<p>A summary of the course</p>	<p>Resources for the course</p>
		
<p>Assignment Status</p>	<p>Help with Assignment</p>	<p>Forum</p>

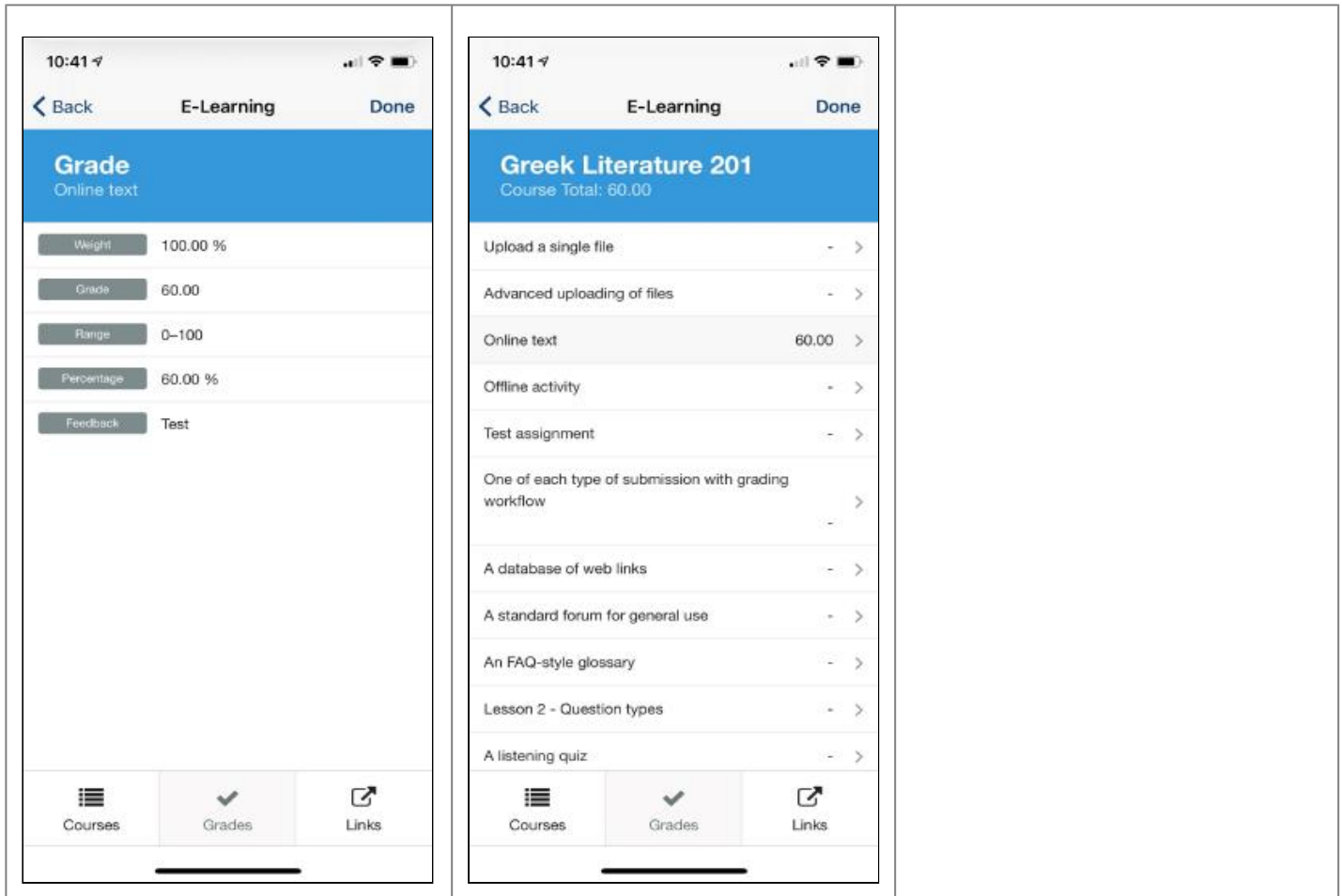


Grades



Options





Technical Overview

The following section describes technical information for the Moodle product integration.

Supported Versions

Moodle 3.7 and later

Prerequisites

- Moodle URL must be publicly available and open to all.
- implement the following procedure in **Moodle configuration** to use the Moodle product integration:
 1. Enable the REST protocol:
 1. Go to the Web services overview page (Site administration > Plugins > Web services > Overview).
 2. Select the **Enable protocols** link.

Moodle 3.7
Dashboard / Site administration / Plugins / Web services / Overview

Overview

Allow an external system to control Moodle

The following steps help you to set up the Moodle web services to allow an external system to interact with Moodle. This includes setting up a token (security key) authentication method.

Step	Status	Description
1. Enable web services	Yes	Web services must be enabled in Advanced features.
2. Enable protocols	soap rest	At least one protocol should be enabled. For security reasons, only protocols that are to be used should be enabled.
3. Create a specific user		A web services user is required to represent the system controlling Moodle.
4. Check user capability		The user should have appropriate capabilities according to the protocols used, for example webservice/restuse, webservice/soapuse. To achieve this, create a web services role with protocol capabilities allowed and assign it to the web services user as a system role.
5. Select a service		A service is a set of web service functions. You will allow the user to access to a new service. On the Add service page check 'Enable' and 'Authorised users' options. Select 'No required capability'.
6. Add functions		Select required functions for the newly created service.
7. Select a specific user		Add the web services user as an authorised user.

3. Enable the REST protocol.

Moodle 3.7 English (en)

Dashboard / Site administration / Plugins / Web services / Manage protocols

Manage protocols

Active web service protocols

Protocol	Version	Enable	Settings
REST protocol	2019052000	<input checked="" type="checkbox"/>	
SOAP protocol	2019052000	<input type="checkbox"/>	
XML-RPC protocol	2019052000	<input checked="" type="checkbox"/>	

For security reasons, only protocols that are in use should be enabled.

Web services documentation Default: No

Enable auto-generation of web services documentation. A user can access to his own documentation on his security keys page [More details](#). It displays the documentation for the enabled protocols only.

[Save changes](#)

2. Confirm that Moodle is configured to work with Moodle mobile:

Moodle 3.7
Dashboard / Site administration / Mobile app / Mobile settings

Mobile settings

Enable web services for mobile devices Default: Yes

Enable mobile service for the official Moodle app or other app requesting it. For more information, read the [Moodle documentation](#)

App policy URL Default: Empty

The URL of a policy for app users which is listed on the About page in the app. If the field is left empty, the site policy URL will be used instead.

[Save changes](#)

3. For the **Type of Login** field, select **Via an embedded browser (for SSO plugins)**. Ensure the **URL scheme** field is empty.

Moodle 3.7
Dashboard / Site administration / Mobile app / Mobile authentication

Mobile authentication

Type of login Via an embedded browser (for SSO plugins) Default: Via the app

If the site uses a SSO authentication method, then select via a browser window or via an embedded browser. An embedded browser provides a better user experience, though it doesn't work with all SSO plugins.

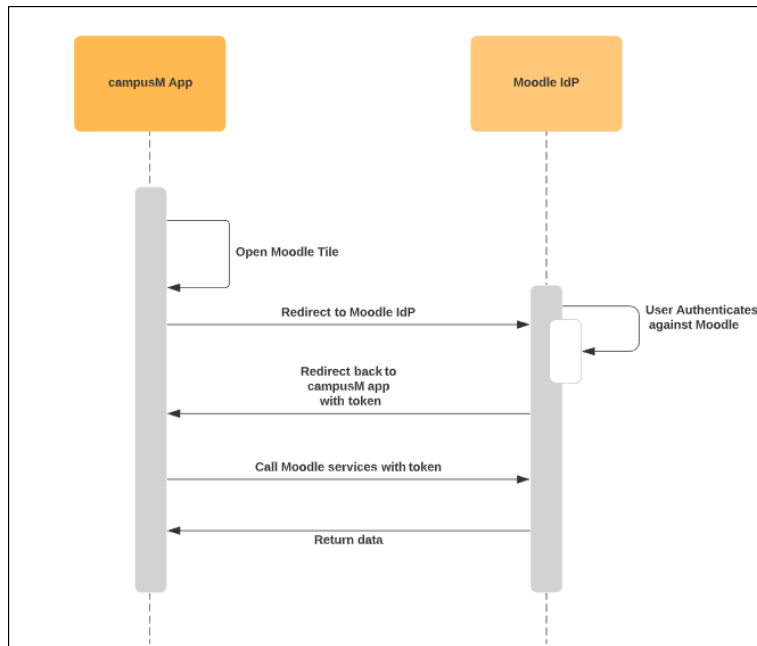
URL scheme Default: Empty

If you want to allow only your custom branded app to be opened via a browser window, then specify its URL scheme here; otherwise leave the field empty.

[Save changes](#)

Technical Flow Diagram

The following is the technical flow diagram for the Moodle product integration:



Technical Flow Diagram

To configure the Moodle product integration, select **Add Product Integration** from the **Product Integrations** main menu option.

Configuration

To configure the Moodle product integration, select **Add Product Integration** from the **Product Integrations** main menu option. Select **LMS/VLE > Moodle**.

The following table describes the configuration options available on this page.

Configuration Option	Description	Mandatory	Data Type	Default	Example
Enable Product Integration	Select to enable the product integration on the user's campusM app.	No	Check box	Yes	
Product Integration Description	A description of the product integration for internal use.	Yes	Description	-	
Screen Title	The title that appears in the top header of the service.	No	String	Moodle	
General					
Default Locale	Enter a default location.	No	String	en-gb	
Time Format	Enter the time format to be used in the	No	Drop-down	LT	

Configuration Option	Description	Mandatory	Data Type	Default	Example
	service.		List		
Date Format (short)	Enter the short date format to be used in the service.	No	Drop-down List	ll	
Date Format (long)	Enter the long date format to be used in the service.	No	Drop-down List	LL	
DateTime Format (short)	Enter the short date/time format to be used in the service.	No	Drop-down List	llll	
DateTime Format (long)	Enter the long date/time format to be used in the service.	No	Drop-down List	LLLL	
Moodle Links					
Global Link Behavior	Internal links are opened within the app, whereas external links are opened in the default browser app on the user's device.	No	Drop-down List	Legacy (all external except for specific Moodle resources)	
Use Global Behavior For Links View	Forces the Links View , if enabled, to respect the setting above. By default, the Links View opens all links externally.	No	Checkbox	Unchecked	
Look and Feel					
Primary Theme Color	Select a color for the main elements on the page.	No	Color Picker	#444444	
Secondary Theme Color	Select a color for the secondary elements on the page.	No	Color Picker	#6f8ea4	
Moodle Server					
Base URL of Moodle Instance	The base URL of the Moodle instance.	Yes	URL		https://myDomain.com
Login Timeout	The number of minutes for the user login until timeout.	No	Number	2	
Token Expiry	Configuration to handle customizing token lifetimes.				
Enable Custom Token Expiry	Enables support for custom access token lifetimes. Note that all access tokens are removed when you log out of the campusM app.	No	Checkbox	Unchecked	
Custom Token Expiry Lifetime	The length of time, in the number of units set by Custom Token Expiry Unit , to store the token for before refreshing it.	No	Integer	1	

Configuration Option	Description	Mandatory	Data Type	Default	Example
Custom Token Expiry Unit		No	Drop-down List	Week(s)	
Text/Labels	Text and labels for the authentication flow				
Text - "Redirecting..."		No	String	Redirecting...	
Text - "This page should automatically redirect you to the login screen. Click the button below to go there now."		No	String	This page should automatically redirect you to the login screen. Click the button below to go there now.	
Text - "Login"		No	String	Login	
Text - "Oops, something went wrong"		No	String	Oops, something went wrong	
Text - "Retry"		No	String	Retry	
Moodle Web					
Enable Moodle Web	Select to enable a link to Moodle from the campusM web application. As currently the Moodle product integration is supported for native devices and not for web, it is possible to use this as a fallback.	No	Checkbox	No	
URL for link-out when using web	Your institution's Moodle URL.	No	URL		https://myDomain.com
Text / Labels					
Error Message	The error message text.	No	String	An error has occurred. Please try again later.	
Grade Title		No	String	Grade	
Grade Weight		No	String	Weight	
Grade		No	String	Grade	
Grade Range		No	String	Range	
Grade Percentage		No	String	Percentage	
Grade Feedback		No	String	Feedback	
Submission Status Label		No	String	Submission status	

Configuration Option	Description	Mandatory	Data Type	Default	Example
Assignment Submission Open Message		No	String	This assignment accepts submissions from	
Submissions Status Submitted		No	String	Submitted for grading	
Submissions Status No Attempt		No	String	No attempt	
Grading Status Label		No	String	Grading status	
Grading Status Not Graded		No	String	Not graded	
Grading Status Not Marked		No	String	Not marked	
Grading Status Release		No	String	Released	
Due Date Label		No	String	Due Date	
Time Remaining Label		No	String	Time Remaining	
Assignment Overdue Message		No	String	Assignment is overdue time ended	
Submissions Heading		No	String	Submissions	
Feedback Heading		No	String	Feedback	
Feedback Grade Label		No	String	Grade	
Feedback Graded On Label		No	String	Graded on	
Service Content					
<hr/>					
Note					
Note: There is a known issue if too many views are enabled, the text on the navigation bar becomes unreadable.					
<hr/>					
Categories					
Category Allow list					
Enable Category Allow list	When enabled, this removes every category and its related content from the	No	Checkbox	Unchecked	

Configuration Option	Description	Mandatory	Data Type	Default	Example
	product integration, except the categories listed below. If the list is empty, everything is removed.				
Approved Categories	Any values entered here must exactly match a valid category name (not description).	No	List		
Enable Categories View	Organizes the course list by the category they're assigned to.	No	Checkbox	Unchecked	
Categories Page Title		No	String	Course Categories	
Sort Categories	Sorts the displayed categories. The default sort order is provided by Moodle.	No	Drop-down List	Moodle Sort Order	
Display Description	Display the category description if returned by Moodle.	No	Checkbox	Unchecked	
Text - "Unnamed Category"	Displayed if any category has no name returned by Moodle.	No	String	Unnamed Category	
Text - "No categories to show"	Displayed if no categories are returned by Moodle.	No	String	No categories to show	
Courses Content					
Courses Page Title	The title at the top of the Courses page.	No	String	Courses	
Courses Navigation Menu Label	The label of the Courses Navigation Menu link.	No	String	Courses	
Text - "Unnamed Course"	Displayed if any course has no name returned by Moodle.	No	String	Unnamed Course	
Enable Grades View	Select to enable Grades View for end-users.	No	Checkbox	Not checked	
Grades Page Title	The title at the top of the Grades page.	No	String	Grades	
Grades Content					
Grades Navigation Menu Label	The label of the Grades Navigation Menu link.	No	String	Grades	
Courses Navigation	The label of the Grades Navigation	No	String	Courses	

Configuration Option	Description	Mandatory	Data Type	Default	Example
Menu Label	Menu link.				
Enable Assignments View?	Enables the Assignments View inside the product integration.	No	Checkbox		
Assignments Content					
Assignments Page Title		No	String	Assignments	
Assignments Navigation Menu Label		No	String	Assignments	
Text - "No Assignment Name Given"		No	String	No Assignment Name Given	
Enable Events View?	Enables the Events View inside the product integration.	No	Checkbox		
Events Content					
Events Page Title		No	String	Events	
Events Navigation Menu Label		No	String	Events	
Events Error Message		No	String	An error has occurred while trying to view your events.	
Text - "No Event Name Given"		No	String	No Event Name Given	
Text - "No additional details provided"		No	String	No additional details provided	

Configuration Option	Description	Mandatory	Data Type	Default	Example
Text - "Description"		No	String	Description	
Text - "Start Time"		No	String	Start Time	
Text - "Duration"		No	String	Duration	
Suffix For Duration (In Minutes)		No	String	minutes	
Enable Messages View?		No	Checkbox	Unchecked	
Messages Content					
Default Tab To Display	The default list to show - read or unread messages.	No	Drop-down List	Unread Messages	
Messages Page Title		No	String	Messages	
Messages Navigation Menu Label		No	String	Messages	
Text - "Unread"		No	String	Unread	
Text - "Read"		No	String	Read	
Text - "No unread messages."		No	String	No unread messages.	
Text - "No read messages."		No	String	No read messages.	
Messages Error Text		No	String	Error fetching messages, please try again later.	

Configuration Option	Description	Mandatory	Data Type	Default	Example
Message Details					
Message Detail Header Prefix		No	String	From:	
Text - "Mark as Read"		No	String	Mark as Read	
Text - "Sent At"		No	String	Sent At	
Text - "Read At"		No	String	Read At	
Label Width (in pixels)	Has a minimum of 75 pixels.	No	Integer	125	
Links Content					
Links Page Title	The title at the top of the Links page.	No	String	Links	
Links Navigation Menu Label	The label of the Links Navigation Menu link.	No	String	Links	
Links List	Enter links to appear on the Links page.	No	Array		
Link Text	The text to display.	No	String		Moodle web app
Link	The URL to link out to.	No	URI		https://myDomain.com
Add Item	Select to add a new link to the Links List .	No	Button		
Live Title					
Enabled	Enable the Moodle live tile.	No	Checkbox	Unchecked	
Enable Live Tile Deep Linking	Enables the widgets on the navigation bar to link to their respective content. Courses link to the Categories View if enabled, and the course list otherwise.	No	Checkbox	Unchecked	
Date Type to Use for Upcoming Assignments	Set the date type to be used for upcoming assignments.	No	Drop-down List	Cut Off Date	
Include Assignments That Do Not Have Deadline Dates Set	Enable the option to include assignments that do not have a deadline date set.	No	Checkbox	Checked	

Configuration Option	Description	Mandatory	Data Type	Default	Example
Prioritize Live Tile Items					
Priority	This ordered list prioritizes the items that appear on the live tile. The item at the top of the list appears first, left-to-right, while the last item appears last.	No	Ordered List	<ol style="list-style-type: none"> 1. Courses 2. Assignments 3. Events 4. Messages 5. Forum Posts 	
Icon Bar					
Note					
Up to a maximum of four widgets are displayed on the icon bar, in order of the Prioritize Live Tile Items list.					
Courses					
Enabled	Enable the Courses link in the icon bar.	No	Checkbox	Checked	
Label	The Courses label in the icon bar.	No	String	Courses	
Filter By Start And End Dates	If enabled, excludes any courses that have not started yet, or have already ended.	No	Checkbox	Checked	
Assignments					
Enabled	Enable the Assignments link in the icon bar.	No	Checkbox	Checked	
Label	The Assignments label in the icon bar.	No	String	Assignments	
Events					
Enabled	Enable the Events link in the icon bar.	No	Checkbox		
Label	The Events label in the icon bar.	No	String	Events	
How Many Days	How many days to look into the future for events.	No	Number	7	
Messages					
Enabled	Enable the Messages link in the icon bar.	No	Checkbox	Checked	
Label	The Messages label in the icon bar.	No	String	Message	
Message Types	Indicate the message type: Conversations , Notifications , or both.	No	Drop-down List	Both	

Configuration Option	Description	Mandatory	Data Type	Default	Example
Forum Posts					
Enabled	Enable the unread Forum Posts counter in the icon bar.	No	Checkbox	Unchecked	
Label	The Forum Posts label in the icon bar.	No	String	Forum Posts	
Next Activity					
Label - "Next Activity"	The label of the link to move to the next activity.	No	String	Next Activity	
Label - "No Activity Due"	The label of the message that no activity is due.	No	String	No Activities Due	
Activities to Include	Select the activities to include.	No	List of checkboxes	All checked	
Caching					
For performance and offline support					
Max Age	The number of hours that cached content can be presented to the user.	No	Number	720	
Time to Live	The number of minutes that cached data is used before a refetch is attempted.	No	Number	10	