

Primo VE

Overview

Integrating campusM and Primo VE enables users to enjoy the full user experience of Primo VE built into their mobile app and web portal. The simple-to-deploy integration, configured only within the App Manager, delivers a mobile-specific styling and structure, providing users with a seamless engagement of their library services through the app.

For more information, watch [Library Integration - Primo VE](#) (6:58 min).

About Ex Libris Alma

Alma is the solution your library needs as the focal point of learning and research at your institution. Alma is designed to ensure that your entire collection can be managed through a single interface and that you can continue to serve students, instructors, and researchers with a collection optimized for their needs. With Alma you can manage all the resource types your collections include within a single interface, including electronic, print, and digital.

<http://www.exlibrisgroup.com/category/AlmaOverview>

About Ex Libris Primo VE

Primo VE is Ex Libris' patron-facing discovery service, providing centralized and personalized access to all resources in your fulfillment network: your institution and any partner institutions. Patrons can locate physical, electronic, and digital resources in all locations, with available information for physical resources (including the ability to request these resources for checkout at the location of the patron's choice), and instant online access to electronic and digital resources.

Alma information is published to Primo VE on a regular basis. Primo VE empowers libraries to shape the discovery experience, providing students, faculty, and staff an intuitive, end-to-end service, and maximizing the value of library collections.

<http://www.exlibrisgroup.com/category/PrimoOverview>

User Experience

The following section describes information relating to the user experience for the Primo VE product integration.

User Activities

Users are able to use Primo VE integration for any functionality available in Primo VE: search, view library card, submit a request, etc.

Authentication

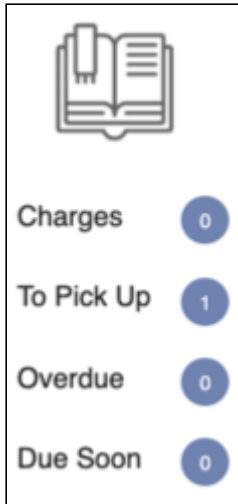
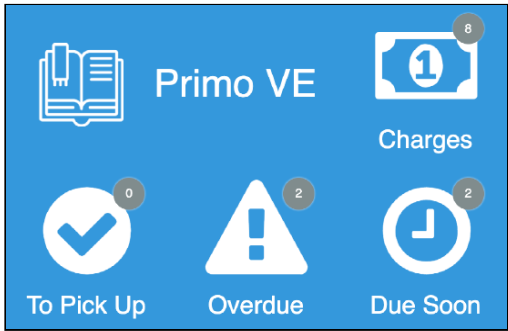
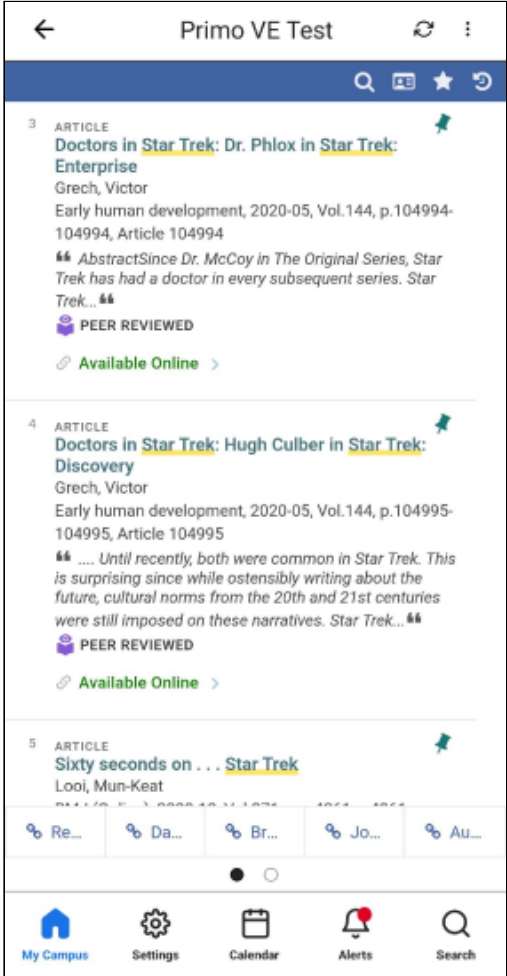
As described in the technical flow diagram, once the user is logged in to the app, authentication to Alma/Primo VE is being done behind the scenes (SSO) with the AlmaID received from the IDP. A login is not required from the user at any stage. If the app sends an invalid AlmaID to Alma, the user will not be logged in and will need to log in manually.

Offline Support

Not supported.

Screenshots

The following is an overview of the Primo VE user interface for reference when configuring it.

<p>Primo VE Legacy Live Tile</p>	<p>Primo Live Tile Example of 3 x 2 Dimensions</p>	<p>Selecting the tile opens PrimoVE per configuration, and allows full functionality, similar to the responsive mobile browser experience.</p>
		

Live Tile

For the Primo VE live tile legacy UI, we recommend using the following dimensions for an optimized experience:

- 1 width x 2 height
 - Up to 4 widgets

The new Primo VE live tile UI is designed to work with the following sizes. The tile will attempt to display as many elements as possible regardless of the dimensions set, but we cannot guarantee the intended experience if you do not adhere to the following dimensions. The tile dimensions are set in the App Builder, while the widgets per row (and other details) are set in the Configuration page for this product integration.

- 1 wide x 1 high
 - This is a special case. The tile only displays one widget (the highest prioritized, enabled widget).
- 2 wide x 1 high
 - We recommend using 1 - 2 widget rows and using 1 - 3 widgets per row.
- 2 wide x 2 high
 - We recommend using 2 - 3 widget rows and using 1 - 3 widgets per row.
- 3 wide x 1 high
 - We recommend using 1 - 2 widget rows and using 2 - 4 widgets per row.
- 3 wide x 2 high
 - We recommend using 2 - 3 widget rows and using 2 - 4 widgets per row.

We also recommend keeping the header text and widget labels for the live tile short.

Technical Overview

The following section describes technical information for the Primo VE product integration.

Supported Versions

Alma November 2019 release.

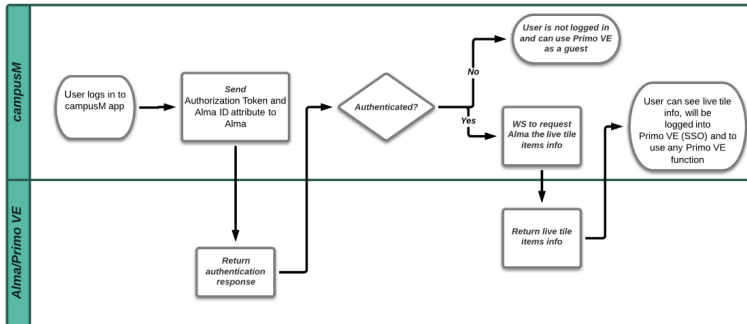
Prerequisites

The following are the prerequisites for the Primo VE product integration:

- IDP should return the AlmaID attribute. The Alma ID attribute is a unique ID controlled by the customer that is defined per student/staff member in Alma.
If using CMAuth - this attribute can have any name in the IDP attributes response (from SAML/OAuth/LDAP) but need to be mapping in Additional Mapping in the CMAuth Integration Profile.
Otherwise - AlmaID attribute must be returned in LDAP attributes response.
Due to this new mapping in authentication token, users need to logout & login to the app.
- Handshake between Alma and campusM: to enable secured access to Primo VE, an authorization token needs to be configured in Alma (**Configuration > Discovery > customer settings > app_authorization_token**) and the same code needs to be configured in the app (**App Manager > Product Integrations > Add Product Integration > Primo VE > Authorization Code**).
- Native app (Android/iOS).
- The native apps (Android and iOS) need to be at running at least the January 2021 release.

Technical Flow Diagram

The following is the technical flow diagram for the Primo VE product integration:



Primo VE Technical Flow Diagram

When the home page is active, the live tile is refreshed automatically every five minutes. If the home screen is inactive, it is not updated in the background. When the home screen becomes active again, the timer starts again if the update period has elapsed.

Configuration

To configure the Primo VE product integration, select **Add Product Integration** from the **Product Integrations** main menu option.

Select **Primo VE** and the following configuration page appears:

The following table describes the configuration options available on this page.

Configuration Option	Description	Mandatory	Data Type	Default	Example
Enable Product Integration	Select to enable the product integration on the user's app.	No	Check box	Yes	
Product Integration Description	A description of the product integration for internal use.	Yes	Description	-	
Screen Title	The title that appears in the top header of the service.	No	String	Primo VE	
General					
Page Title	The secondary title, after Screen Title.	No	Description	-	Our Library
Base URL	The base URL of your Primo VE instance.	Yes	URL	-	https://alma-eu02-campusm.exlibrisgroup.com
View ID	The View ID of your Primo VE	Yes	String	-	NORTH_INST
Authorization Token	Must be the same authorization token as in Alma, in the following format: "^(?=[^\\s]) [\\w\\W\\d] {8,} \$" For more information, see Prerequisites .	Yes	String.	-	q58151J4bD

Configuration Option	Description	Mandatory	Data Type	Default	Example
Language Code	The language to display Primo VE integration. Not applied to the live tile.	No	String	en	en
General Error Message	General error message if the page fails to load.	No	String	Please try again later	Failed to load. Please try again later
Landing Page	The page displayed by default on the Primo VE PI homepage.	No	Drop-down List	Primo VE home page (Search)	
Navigation Bar					
Item Tab Minimum Width	The minimum width in pixels for all tabs in the navigation bar.	No	Integer	160	
Item Tab Minimum Width (Large Screen)	The minimum width in pixels for all tabs in the navigation bar, if sidebar navigation is enabled, or the page is in landscape mode.	No	Integer	240	
Truncate Text In Item Tab		No	Checkbox	Yes	
Look and Feel					
Main Theme Color	Select a color for the main elements on the page	No	Color Code	#444444	
Live Tile					
Enabled	Select to make the Primo VE tile live.	No	Check box	Yes	
Design	Select the UI design (new or legacy).	No	Dropdown	Enable Latest Live Tile Design	
General					
Loading Label	The text that is displayed while loading the Live Tile.	No	String	Loading...	
Please Login Label	The text that is displayed when the user is not logged in.	No	String	You are not logged into Primo VE	
Live Tile Look and Feel					
Badge Color	Select a color for the badge.	No	Color Code	#cd5c5c	
Badge Opacity	<p>Alters the opacity for all badges shown on the live tile. Has a minimum of 0.5, and a maximum of 1.</p> <hr/> <p>Note</p> <p>Only applicable for the legacy UI design.</p> <hr/>	No	Number	0.65	
Displayed Items					

Configuration Option	Description	Mandatory	Data Type	Default	Example
Header					
Header Text Enabled	Not available in the legacy design. Select to display the header on the live tile. If cleared, the text does not appear in the header. If both the header text and the header logo are disabled, the header does not appear.	No	Boolean	False	
Header Text	Not available in the legacy design. Set the header text	No	String	Primo VE	
Header Icon Enabled	Not available in the legacy design. Select to display the logo on the live tile. If disabled, the log does not appear in the header. If both the log and the header text are disabled, the header does not appear.	No	Boolean	False	
URL for Header Icon	Not available in the legacy design. The URL of the image to be used as the logo in the header.	No	String		
Customise Live Tile Header Padding	Not available in the legacy design. If enabled, enables you to customize the blank space around the header block. All values have a minimum of 0.	No	Checkbox	No	
The First Widget(s) Should Display on the Same Row As the Header	Not available in the legacy design. If disabled, the first widget row starts below the header.	No	Checkbox	Yes	
Hide Widget Labels	If enabled, hides all labels for any configured widgets on the tile. Does not affect the Live Tile Header.	No	Checkbox	No	
Widgets Per Row	This sets the number of widgets to display per row. There is a minimum of 1 and a maximum of 5.	No	Integer	3	
Charges					
Enabled	Select to display charges.	No	Checkbox	Yes	
Label	Label for charges.	No	String	Charges	
On Hold Shelf					
Enabled	Select to display the on hold shelf items.	No	Checkbox	Yes	
On Hold Items Only	Only displays items with a status of "On Hold Shelf"				
Label	Label for the on hold shelf items.	No	String	To Pick Up	
Overdue Loans					
Enabled	Select to display the overdue loans.	No	Checkbox	Yes	

Configuration Option	Description	Mandatory	Data Type	Default	Example
Label	Label for the overdue loans.	No	String	Overdue	
Item Due Back Soon					
Enabled	Select to display the due back soon items.	No	Checkbox	Yes	
Label	Label for the due back soon items.	No	String	Due soon	
Days before Due Date	The maximum number of days before the due date to be considered an Item Due Back Soon.	No	Number	3	
Current Loans					
Enabled	Select to display current loans	No	Checkbox	No	
Label		No	String	Current Loans	
Blocks and Messages					
Enabled	Select to enable Blocks and Messages	No	Checkbox	No	
Label		No	String	Blocks and Messages	
Always Display Widget Count	If enabled, all widgets will display the count even if the count is 0.	No	Checkbox	Yes	
Enable Integration Deep Linking	Enables or disables linking through to Primo VE from this live tile. If this is disabled the tile will fall back to the 'Action (URL)' property set on the tile from App Builder.	No	Checkbox	No	
Prioritize Live Tile Items					
Priority	This ordered list prioritizes the items that appear on the live tile. The item at the top of the list appears first, while the last item appears last.	No	Ordered List	<ol style="list-style-type: none"> 1. Charges 2. On Hold Shelf 3. Overdue Loans 4. Items Due Back Soon 5. Current Loans 6. Blocks and Messages 	
Icons					

Configuration Option	Description	Mandatory	Data Type	Default	Example
Use Custom Icons	Select to use custom icons instead of the default live tile icons.	No	Boolean	False	
URL	Enter the URLs of custom images for the icons of the various widgets.	No	String		