

Retrieve Attendees

Overview

The Retrieve Attendees product integration allows lecturers to get a list of students who attend a specific event.

Vendors

Retrieve Attendees is currently supported by the following vendors:

- RESTful API
- Oracle Peoplesoft

User Experience

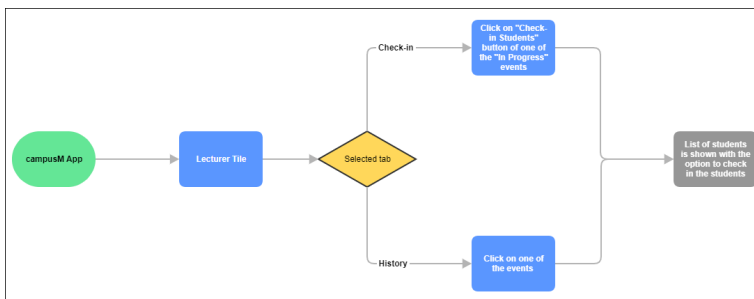
The following section describes information relating to the user experience for the Retrieve Attendees product integration.

User Activities

Staff users can choose to view a list of students who attend a specific event and confirm their attendance.

User Workflow Diagram

The following diagram illustrates the user workflow:



Retrieve Attendees User Flow Diagram

Authentication

Users of the Retrieve Attendees product integration are authenticated by the CMAuth authentication token, so that no separate login is required.

Offline Support

There is no offline support.

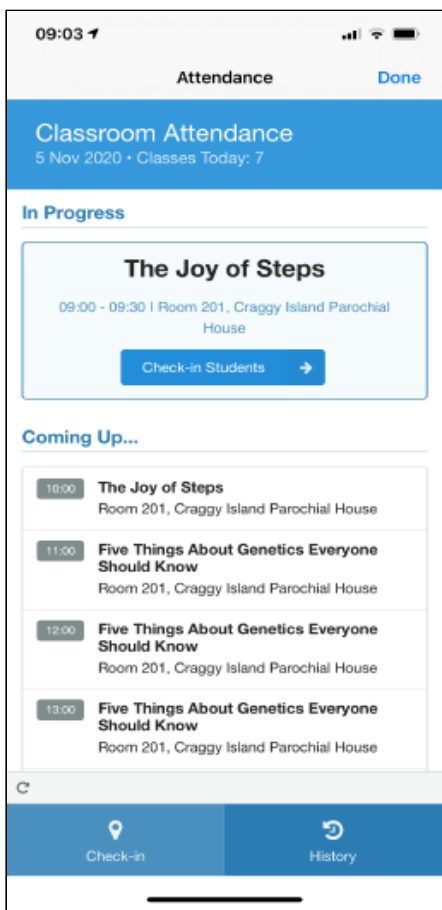
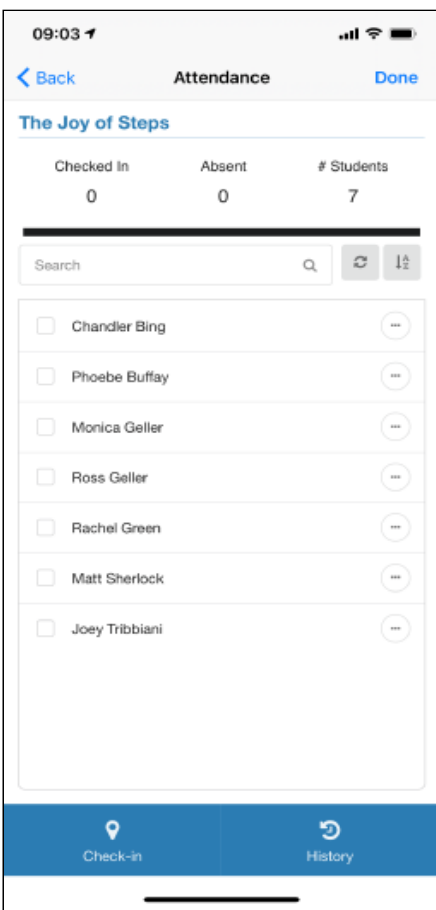
Prerequisites

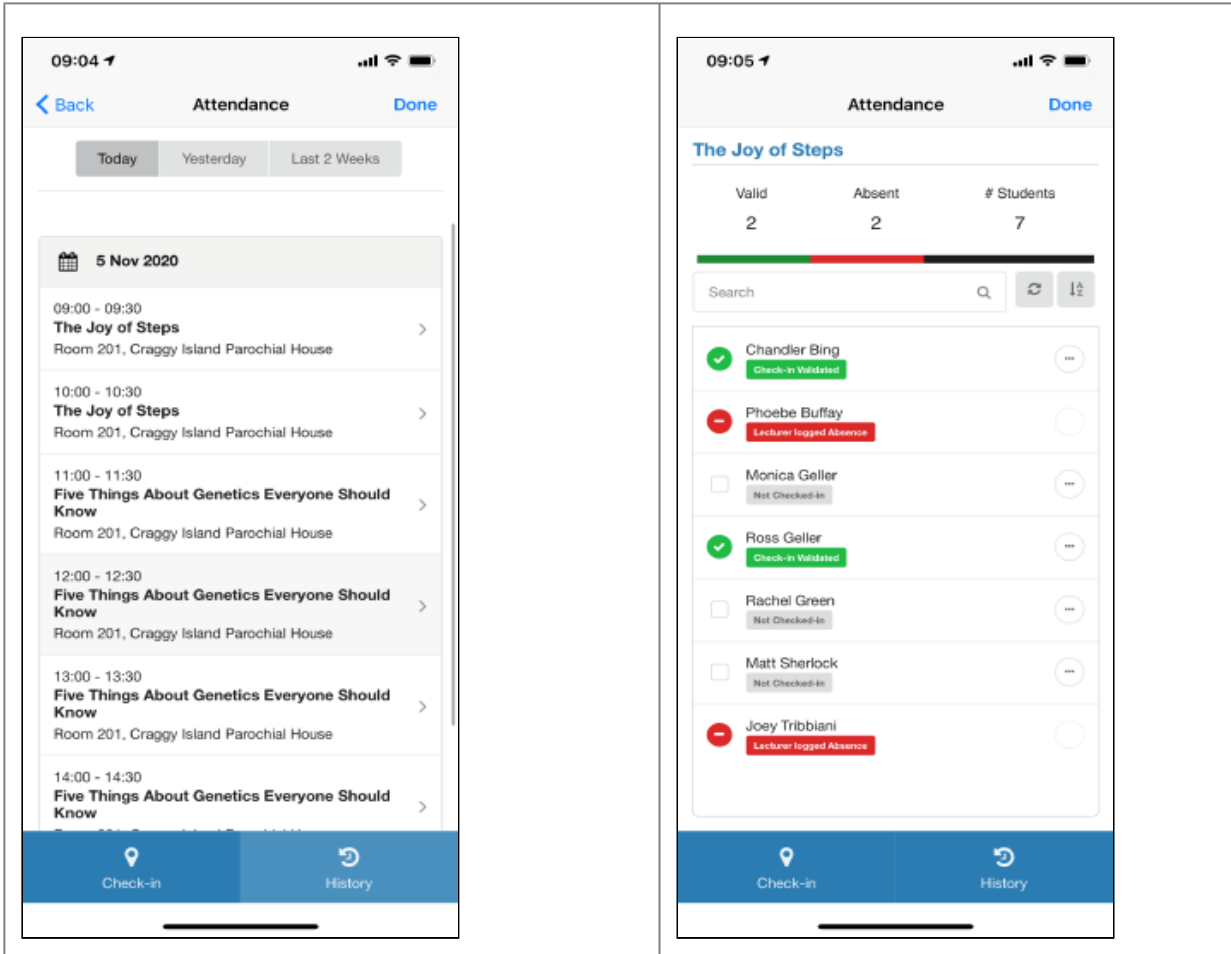
For the Retrieve Attendees product integration to work:

- Attendance must be enabled and configured

Screenshots

The following is an overview of the Retrieve Attendees product integration user interface for a reference when configuring it:

Option I: Attendance Check-in tab - clicking Check-in Students	Attendees List of the Event:
	
Option II: Attendance History Tab:	Attendees List of the event after the Retrieve Attendees product integration is triggered:

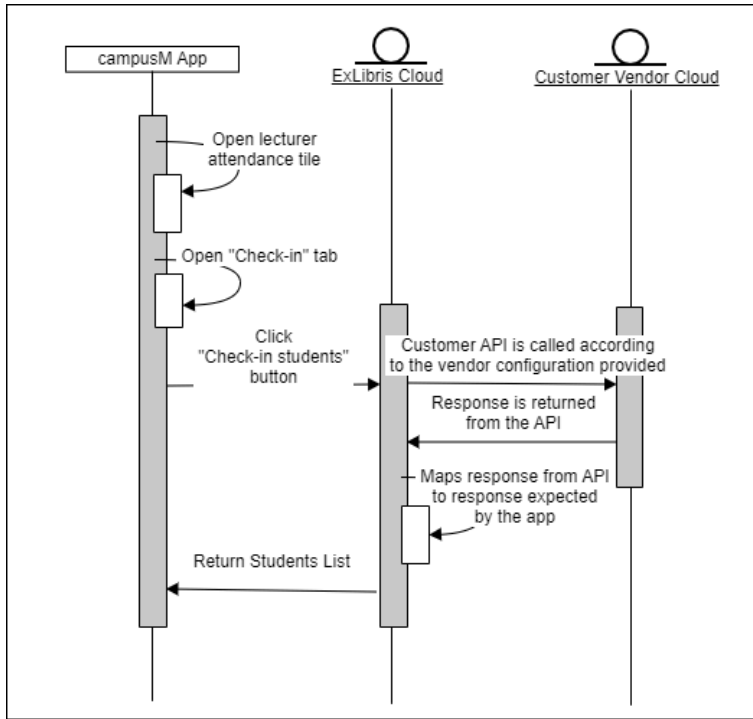


Technical Overview

The following section describes technical information for the Retrieve Attendees product integration.

Technical Flow Diagram

The following diagram illustrates the technical workflow:



Technical Workflow Diagram

RESTful API Vendor

Create the API with the following requirements:

- The API receives an `eventRef` parameter (path/query parameter) or another user identification method.
- The API returns a JSON response with the following structure:

```

{
  "students": [
    {
      "email": "some.email@gmail.com",
      "firstName": "First",
      "lastName": "Last"
    }
  ]
}
  
```

Attribute Mapping for RESTful API

The following table describes the attribute mapping for the RESTful API vendor:

Field	Description	Mandatory (Yes/No)	Data Type	Default	Example
email	The student's email	yes	String	-	some.email@gmail.com
firstName	The student's first name	yes	String	-	Jane
lastName	The student's last name	yes	String	-	Doe

Oracle PeopleSoft Vendor

Create a PeopleSoft query that returns a JSON response with the following structure:

```

{
  "status": "success",
  "data": {
    "query": {
      "numrows": 2,
      "queryname=": "EXAMPLE_CAMPUSM_RETRIEVE_ATTENDEES",
      "rows": [
        {
          "attr:rownumber": 1,
          "EMAIL_ADDR": "exampleStudent1@gmail.com",
          "LAST_NAME": "Smith",
          "FIRST_NAME": "Elizabeth"
        },
        {
          "attr:rownumber": 2,
          "EMAIL_ADDR": "exampleStudent2@gmail.com",
          "LAST_NAME": "Doe",
          "FIRST_NAME": "Jane"
        }
      ]
    }
  }
}

```

The parameters and headers passed into this API are all set in the configuration page.

Example Request:

GET https://{host}

Path: {the required path}, for example /PSIGW/RESTListeningConnector/ExecuteQuery.v1/PUBLIC/{query name}/JSON/NONFILE

The Required Parameters, e.g.:

- isconnectedquery: N
- maxrows: 0
- prompt_uniquepromptname: EVENT_REF
- prompt_fieldvalue: {eventRef value}
- json_resp: true

Basic Authentication

Attribute Mapping for Oracle Peoplesoft

The following table describes the attribute mapping for the Oracle Peoplesoft vendor:

Internal campusM Field Name	Description	PeopleSoft Field Name	Mandatory (Yes/No)	Data Type	Default	Example
email	The student's email.	Concat EMPLID+@email.edu with EMPLID from NAMES	Yes	String		some.email@gmail.com
firstName	The student's first name.	FIRST_NAME from NAMES	Yes	String		Jane
lastName	The student's last name.	LAST_NAME from NAMES	Yes	String		Doe

Configuration

To configure the Retrieve Attendees product integration, from the **Product Integrations** main menu, select **Add Product Integration Instance**.

Select **Retrieve Attendees**. The following configuration page appears:

The screenshot shows the 'Manage Integration' page for 'Retrieve Attendees'. It features a sidebar with navigation links: 'Manage Integration', 'Students List Vendor', and 'Import/Export Configuration'. The main content area has the following sections:

- Enable Product Integration:** A checkbox that is currently unchecked. Below it is the text 'Check this box to enable Retrieve Attendees'.
- Product Integration Description*:** A text input field with the placeholder 'Description for this Retrieve Attendees instance'.
- Students List Vendor:** A dropdown menu labeled 'Vendor Name' with the option '-- Please Select --'.
- Import/Export Configuration:** A section with a 'Choose File' button and the text 'No file chosen'. Below this are two buttons: 'Import Configuration' and 'Export Configuration'.

Retrieve Attendees Configuration Page

The following table describes the configuration options available on this page.

Configuration Option	Description	Mandatory	Data Type	Default	Example
Manage Integration					
Enable Product Integration	Select to enable the product integration on the user's campusM app.	No	Checkbox	Unselected	
Product Integration	A description of the product integration for internal use	Yes	String		Retrieve Attendees

Configuration Option	Description	Mandatory	Data Type	Default	Example
Description					
Students List Vendor					
Vendor Name	Sets the vendor to use	Yes	Dropdown		RESTful API
URL to retrieve the information	The URL for the Web service	Yes	URL	https://myDomain.com	
URL Query Parameters	The parameters sent as part of the query	No	Object		
URL Path Parameters	The parameters sent as part of the path	No	Object		
General Headers	Add (key, value) for additionally needed headers	No	Object		
Authentication Type	<p>Select one of the following options:</p> <ul style="list-style-type: none"> No Auth Basic Auth API Key Bearer token OAuth Using User App Authentication – select an OAuth integration profile (from the Integration Profiles configured in App Settings) and choose where the access token should be added, Header or URL. OAUTH Using Client Credentials – select this if you are using a preliminary token call to get the access token. 	No	Object		
Import / Export Configuration					
You can configure product integration and then export it to another campusM environment, for example, from sandbox to production or from preview to production.					
Import your configuration file here	To import the configuration settings from a JSON file of a previously exported product integration, select Choose File to choose the file to load. Then, select Import Configuration to import the settings.	No			
Import Configuration	After selecting the JSON file to import, select this option to load the configuration settings from the file.	No			
Export Configuration	To export the current settings of the product integration as a JSON file, select this option.	No			