

## List

---

### Overview

The List product integration displays list of items either configured in the App Manager or received from a REST API. It is possible to display a brief view of the items on the home page. The items can be linkable to external URLs.

For more information, watch [List](#) (5:10 min).

---

### Vendors

The List product integration is supported currently by the RESTful API vendor or by basic App Manager configuration.

---

### User Experience

The following section describes information relating to the user experience for the List product integration.

---

#### User Activities

- Users can view lists of items in the live tile (home page) and view the full list after clicking the tile.
  - The user can view a filter page (optional) and select a filter to display the lists for that filter.
  - The user can treat the list as a checklist and view the progress of each list.
  - The user can mark items as favorites and view them in the **Favorites** tab.
  - The user can search items via a search bar.
  - The user can filter items by due date (when enabled) such as, done, due, overdue, etc.
- 

#### Authentication

When using the REST API vendor, the connection to the vendor is handled as part of the generic API Configuration under the Vendor section. The first part of the API Configuration details the URL to which to connect and any parameters that are required. The second part relates to the API Authentication for the URL, which is vendor-specific, and could also be specific to the vendor instance the client is running.

---

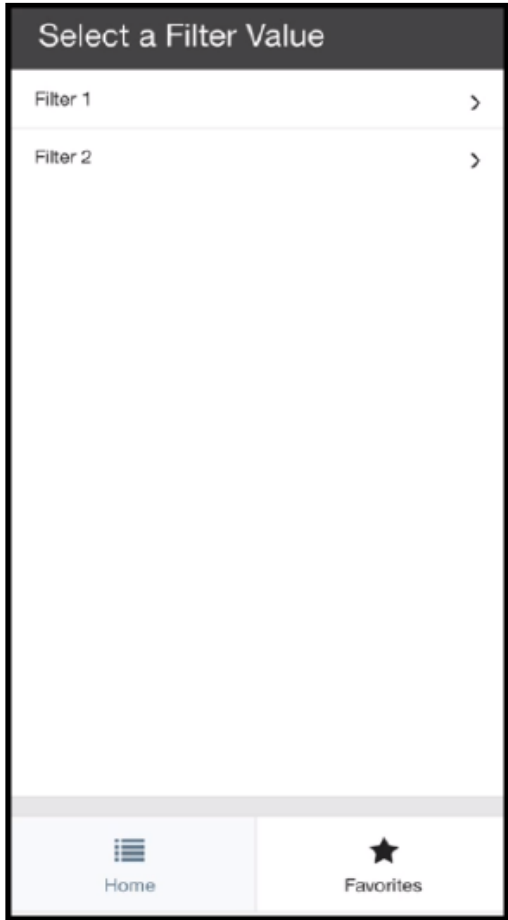
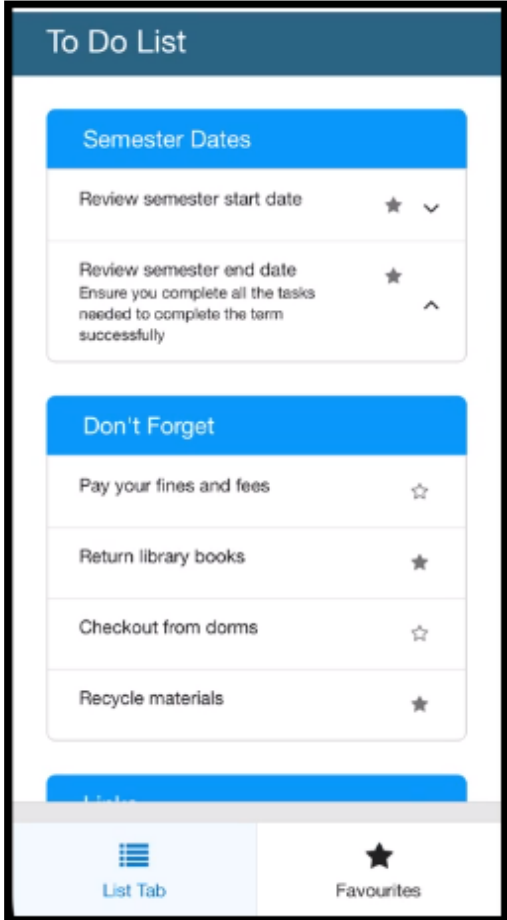
#### Offline Support

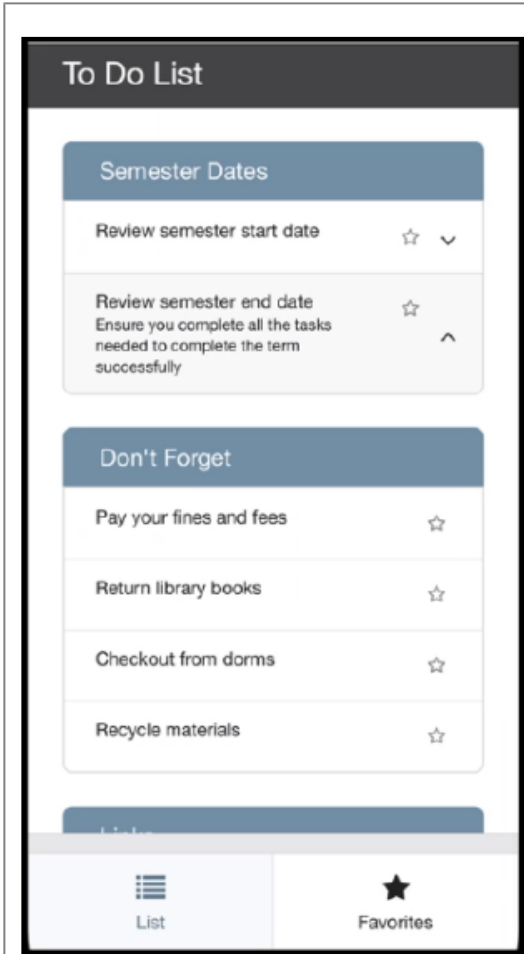
No offline support is available.

---

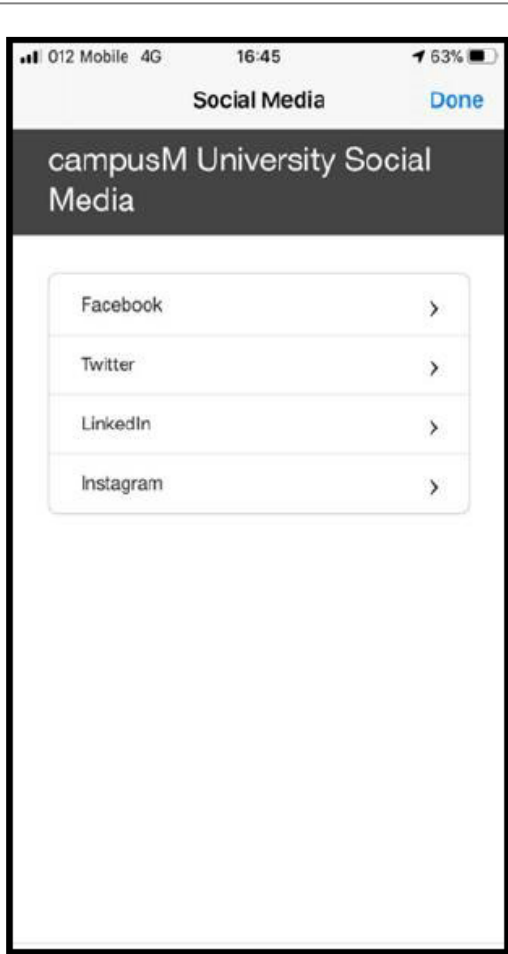
## Screenshots

The following is an overview of the List product integration user interface for reference when configuring it:

Select Filter (the preliminary filtering page is not mandatory)	To Do List with Favorites Selected
 <p>The screenshot shows a mobile app interface titled "Select a Filter Value". It features a list with two items: "Filter 1" and "Filter 2", each with a right-pointing chevron icon. At the bottom, there is a navigation bar with two tabs: "Home" (represented by a list icon) and "Favorites" (represented by a star icon).</p>	 <p>The screenshot shows a mobile app interface titled "To Do List". It has a blue header bar. Below it, there are two sections: "Semester Dates" and "Don't Forget". The "Semester Dates" section contains two items: "Review semester start date" with a star and a downward arrow, and "Review semester end date" with a star and an upward arrow. The "Don't Forget" section contains four items: "Pay your fines and fees" with a star, "Return library books" with a star, "Checkout from dorms" with a star, and "Recycle materials" with a star. At the bottom, there is a navigation bar with two tabs: "List Tab" (represented by a list icon) and "Favourites" (represented by a star icon).</p>
To Do List Without Favorites Selected	Links Without Favorites



**Favorites with Checkboxes**



**To Do List with Checkboxes**

[Back](#) First-Year Student Orientation [Done](#)


### Favorites


Before New Student Orientation (NSO)

- Admitted Students Reserve Your Place, which includes registering for an orientation date ★
- Prepare for enrollment by completing the items that pertain to your specific admission situation ★

After New Student Orientation

- Check your email to complete the modules for Online Relationship Violence and Sexual Misconduct (RVSM), Alcohol Assessment (e-CHUG), and Diversity and Inclusion. ★

  
Home

  
Favorites

[Back](#) First-Year Student Orientation [Done](#)


### To Be Done List


Before New Student Orientation (NSO)

- Admitted Students Reserve Your Place, which includes registering for an orientation date ★
- Prepare for enrollment by completing the items that pertain to your specific admission situation ★
- Complete pre-orientation online modules hosted in learning management system, to help you become familiar with resources prior to attending orientation. ☆

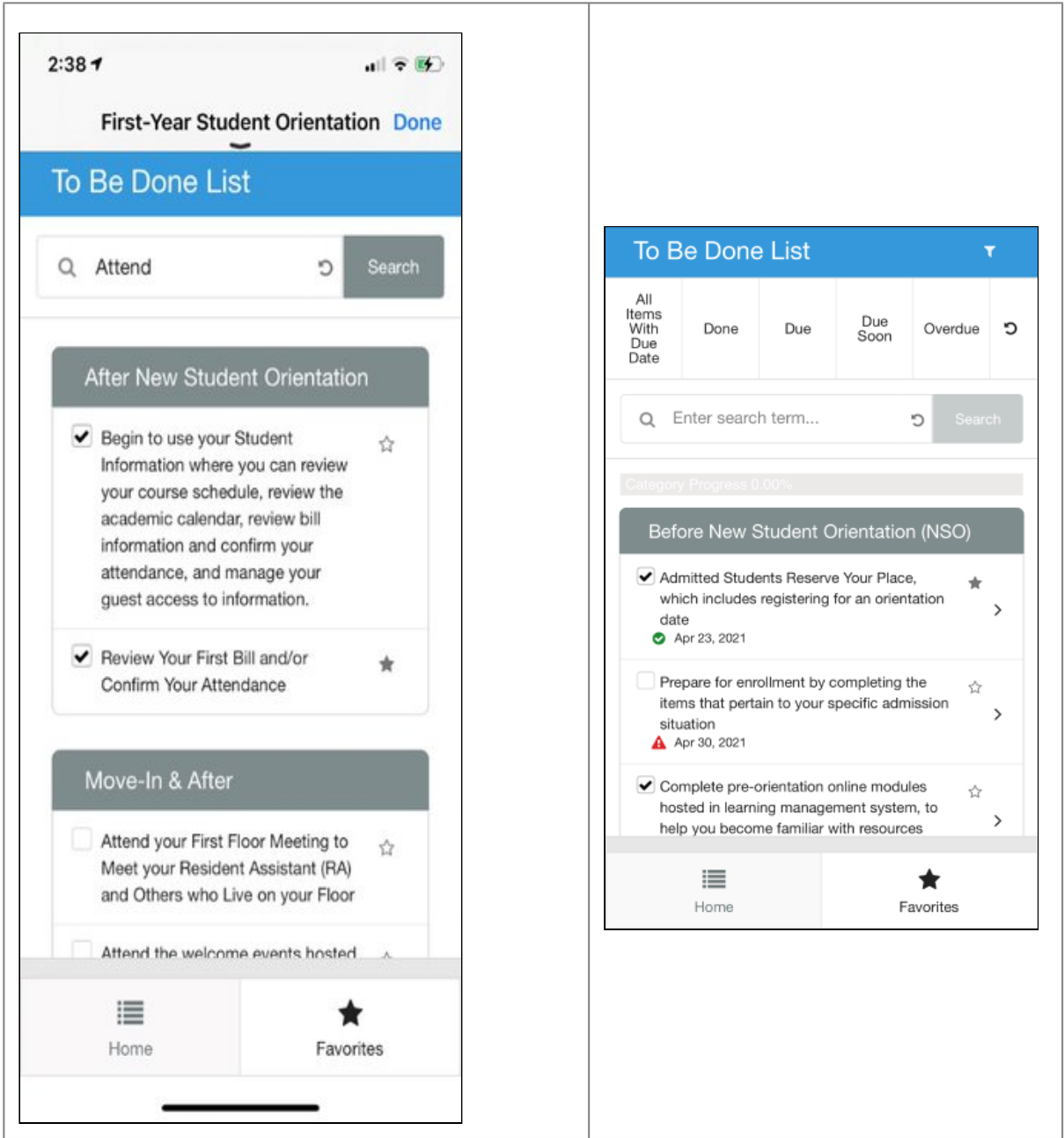
After New Student Orientation

- Check your email to complete the modules for Online Relationship Violence and Sexual Misconduct ★

  
Home

  
Favorites

To Do List with Searchbar



**Live Tile**

A 1\*2 live tile displays the first few items in the list. Items can be configured to link to external URLs.

First Category	Second Category	Only One Category, Without Category Title
<div style="border: 2px solid black; padding: 5px;"> <p><b>Category 1</b></p> <p>Item 1 &gt;</p> <p>Item 3 &gt;</p> <p style="text-align: center;"><b>View More</b></p> </div>	<div style="border: 2px solid black; padding: 5px;"> <p><b>Category 2</b></p> <p>Item 4</p> <p>item 5</p> <p style="text-align: center;"><b>View More</b></p> </div>	<div style="border: 2px solid black; padding: 5px;"> <p>Facebook &gt;</p> <p>Twitter &gt;</p> <p>LinkedIn &gt;</p> <p style="text-align: center;"><b>View More</b></p> </div>

---

## Note

To make the live tile active, the borders in the tile must be disabled. This is done by putting the following in the Tile Config code:

```
"hoverBorderColor": null,  
"borderColor": null
```

---

---

## Technical Overview

---

### RESTful API

In order to retrieve the data via a RESTful API, you may create an API that applies the following requirements:

- The API receives as a query parameter a user parameter that receives the user's identifier as configured in the API configuration.
- The API is in the format: <https://www.mydomain.com/getListData?user=username>
- The API returns a JSON response with the following structure:

```
{  
  "categories": [  
    {  
      "categoryTitle": "Semester Dates",  
      "filter": "Filter 1",  
      "action": "description",  
      "itemsArray": [  
        {  
          "itemTitle": "Review semester start date",  
          "description": "Make\nsure you are aware\n\nof the key dates at  
the start\nincluding\norientation week, online training and\nmore"  
          "image": "https://exampleImage.png"  
        },  
        {  
          "itemTitle": "Review semester end date",  
          "description": "Ensure you complete all the tasks needed to  
complete the term successfully"  
          "image": "https://exampleImage.png"  
        }  
      ]  
    },  
    {  
      "categoryTitle": "Don't Forget",  
      "filter": "Filter 1",  
      "action": "none",  
      "itemsArray": [  
        {  
          "itemTitle": "Pay your fines and fees"  
          "image": "https://exampleImage.png"  
        },  
      ]  
    }  
  ]  
}
```

```

        {
            "itemTitle": "Return library books"
            "image": "https://exampleImage.png"
        },
        {
            "itemTitle": "Checkout from dorms"
            "image": "https://exampleImage.png"
        },
        {
            "itemTitle": "Recycle materials"
            "image": "https://exampleImage.png"
        }
    ]
},
{
    "categoryTitle": "Links",
    "filter": "Filter 2",
    "action": "URL",
    "itemsArray": [
        {
            "itemTitle": "Facebook",
            "url": "https://www.facebook.com"
            "image": "https://exampleImage.png"
        },
        {
            "itemTitle": "Instagram",
            "url": "https://www.instagram.com"
            "image": "https://exampleImage.png"
        },
        {
            "itemTitle": "Google",
            "url": "https://www.google.com"
            "image": "https://exampleImage.png"
        },
        {
            "itemTitle": "Twitter",
            "url": "https://www.twitter.com"
            "image": "https://exampleImage.png"
        },
        {
            "itemTitle": "Linkedin",
            "url": "https://www.linkedin.com"
            "image": "https://exampleImage.png"
        },
        {
            "itemTitle": "Buzzfeed",
            "url": "https://www.buzzfeed.com"
            "image": "https://exampleImage.png"
        }
    ]
}
]

```

```

    }
  ]
}

```

#### Response Mapping

Field Name	Type	Description	Mandatory Yes/No
categories	Array	The array of categories	Yes
categoryTitle	String	The title of the category	Yes
filter	String	The title of the filter	Yes unless Enable Preliminary Filters Page is not enabled
action	String (one of 3 options: "URL", "description" or "none")	The action for the items in the category	Yes
itemsArray	Array	The array of items per category	Yes
itemTitle	String	The title of the item	Yes
description	String	The description of the item.	Yes when the category action is "description"
url	String	The URL for the item to link to	Yes when the category action is "url"
image	String	The URL for the image for the given item that displays on the live tile	No
dueDate	String	The due date for the item. Must use DD/MM/YYYY formatting.	No
isFavorite	Boolean	Is this item a favorite	No
isChecked	Boolean	Is this item checked	No

The lists can also be configured directly on the configuration page by selecting **Configuration** as the vendor.

In order to update the selections via an API, you may create an API that applies the following requirements:

- The API is a POST request in the format: <https://www.mydomain.com/updateSelection>
- The body of the request must be in the following structure:

#### Sample Response

```

{
  "category": "category title",
  "item": "item title",
  "add": true,
  "type": "favorites",
  "userId": "userId"
}

```

### Body Mapping

Field Name	Type	Description	Mandatory Y/N
category	String	The category title	Yes
item	String	The item title	Yes
add	boolean	True for adding, false for removing	Yes
type	String	Either "favorites" or "checkbox"	Yes
String	The user's identifier as configured in the API configuration.	Yes	

The API returns a JSON response of the following structure:

### Sample Response

```

{"status": "success"}
    
```

### Response Mapping

Field Name	Type	Description	Mandatory Y/N
status	String	The status of the request.	Yes

## PeopleSoft

The PeopleSoft vendor requires the RESTListeningConnector listener.

The PeopleSoft vendor only returns Description items. It doesn't support Image URLs or External URLs (see when the vendor is set to **Configuration**).

The URL passed to the Product Integration needs to include the full path to the query, i.e. [https://PEOPLESOFT\\_HOSTNAME/PSIGW/RESTListeningConnector/ExecuteQuery.v1/PUBLIC/QUERY\\_NAME/JSON/NONFILE](https://PEOPLESOFT_HOSTNAME/PSIGW/RESTListeningConnector/ExecuteQuery.v1/PUBLIC/QUERY_NAME/JSON/NONFILE) (assuming your query follows this URL pattern).

We expect and set a number of query parameters by default. These are:

- - isconnectedquery (set to N)
  - maxrows (set to 0)
  - prompt\_uniquepromptname (set in the Configuration, below)
  - prompt\_fieldvalue (set to the User Identifier Value from the Configuration, below)
  - json\_resp (set to true)

The expected response structure is as follows. Row attributes must include **DUE\_DATE** (if due dates are enabled in the configuration), **ITEM\_TITLE**, and **COMMENT\_INFO**:

```

{
  "status": "success",
  "data": {
    "query": {
      "numrows": 6,
      "queryname=": "AAC_CM_TODO_TILE",
      "rows": [
    
```

```

        {
            "attr:rownumber": 1,
            "DUE_DATE": "01-01-2022",
            "ITEM_TITLE": "Title",
            "COMMENT_INFO": "Comment Info",
            // other attributes
        }
    ]
}
}
}

```

### Note

**DUE\_DATE** must always be in the DD/MM/YYYY format, just like the RESTful API vendor.

## Configuration (Categories and Items)

The lists may also be configured directly on the configuration page (by selecting **Configuration** as the vendor).

## Product Integration Configuration

To configure the List product integration, select **Product Integrations > Add Product Integration** and select **List**.

The following table describes the configuration options available on this page.

Configuration Option	Description	Mandatory	Data Type	Default	Example
<b>Manage Integration</b>					
Enable Product Integration	Select to enable the product integration on the user's app.	No	Checkbox	Unchecked	
Product Integration Description	A description of the product integration for internal use	Yes	String		
Screen Title	The title that appears in the top header of the service	No	String	Registration Status	
<b>General</b>					
Enable Preliminary Filters Page	Select to enable the preliminary filters page	No	Checkbox	Unchecked	
Enable Favorites	Select to enable favorites	No	Checkbox	Selected	
Enable	Select to enable checklists	No	Checkbox	Unchecked	

Configuration Option	Description	Mandatory	Data Type	Default	Example
Checklist					
<b>Checklist Progress Bar</b> – Controls for displaying the progress of completion for each of the lists.					
Enable Progress Bar	Enables or disables the progress bar for each individual list.	No	Checkbox	Unchecked	
Text - "Progress"	The text inside the progress bar, next to the value.	No	String	Progress	
Progress Bar Type	Determines how the progress is formatted. Either a percentage value, i.e. "40%", or a fraction, i.e. "4 of 10".	No	Array	Percentage (%)	
<b>Categories Progress Bar</b>					
Enable Progress Bar	Enables or disables the progress bar for each category.	No	Checkbox	Unchecked	
Text - "Progress"	The text inside the progress bar, next to the value.	No	String	Progress	
Progress Bar Type	Determines how the progress is formatted. Either a percentage value, i.e. "40%", or a fraction, i.e. "4 of 10".	No	Array	Percentage (%)	
<b>Due Dates Configuration</b>					
Enable Due Dates	Select to enable due dates.	No	Checkbox	Unchecked	
Due Date Display Format	The format in which to display the due date.	No	String	ll	
Due Soon Popup	Choose the number of days before the due date to display popup reminder.	No	Number	7	
Due Soon Popup Title Label		No	String	You have items due soon.	
Due Soon Popup Button Label		No	String	Show me	
All items With Due Date Label		No	String	All items With Due Date	
Done Items Label		No	String	Done	
Due Items Label		No	String	Due	
Overdue		No	String	Due Soon	

Configuration Option	Description	Mandatory	Data Type	Default	Example
Items Label					
Done Icon Color		No	Color Code	#178932	
Due Soon Icon Color		No	Color Code	#e6c100	
Overdue Icon Color		No	Color Code	#db2828	
Enable Searchbar	Select to enable searchbar.	No	Checkbox	Unchecked	
<b>Vendor</b> – This section defines the structure of the APIs used in this product integration.					
Vendor Name	Defines to which vendor the integration connects.	No	URI	<a href="https://myDomain.com">https://myDomain.com</a>	
<b>RESTful API Configuration</b> This section contains the RESTful API details to define the API structure.					
Base URL to retrieve the information		No	URI	<a href="https://myDomain.com">https://myDomain.com</a>	
User Input Identifier					
Parameter Input Option	Choose a parameter input option that matches your needs. i.e. Select 'Username' to use the username attribute associated with the end- user.	No	Object		Username
Token Property Name	Enter the property name to be retrieved from the token ( { USERNAME, MAIL, GIVEN_NAME, SURNAME, FULL_NAME } or as named in the integration profile).	No	String		USERNAME
Constant Value	The value when the User Identifier is set to Constant.	No	String		
<b>API Configuration</b> This section contains the API details to define the API structure. You can test the API configuration. See <a href="#">Testing API Product Integration Configuration</a> .					
Base URL to retrieve the information	The URL for the API.	No	URL	<a href="https://myDomain.com">https://myDomain.com</a>	
User Input Identifier					
Parameter Input Option	The parameter input option. Possible values: Username, Token Property, and Constant. It is sent as the path parameter.	No	Drop-down list		Usurname

Configuration Option	Description	Mandatory	Data Type	Default	Example
Token Property Name	Enter the property name to be retrieved from the token ({ USERNAME, MAIL, GIVEN_NAME, SURNAME, FULL_NAME } or as named in the integration profile)	No	String		USERNAME
Constant Value	The value when the user identifier is set to Constant	No	String		
<b>API Authentication</b>					
Authentication Type	<p>Authentication type against the web service. The options are the following:</p> <ul style="list-style-type: none"> <li>No Auth.</li> <li>Basic - username and password for Base64 basic authentication.</li> <li>API Key - can be added to a Header or to the URL (Query Param) or both.</li> <li>OAuth – select an OAuth integration profile (from the Integration Profiles configured in App Settings) and choose where the access token must be added, Header or URL.</li> </ul>	No	Array		No Auth
<b>PeopleSoft API Configuration</b>					
Base URL to retrieve the information	This is the full domain and path of the PeopleSoft query, minus the query parameters.	Yes	URL		
<b>User Input Identifier</b>					
Parameter Input Option	Either <b>Username</b> , <b>Token Property</b> (from CMAuth) or <b>Constant</b> (for a static value).	Yes	Drop-down list		Username
Token Property Name	Only used if <b>Parameter Input Option</b> is <i>Token Property</i> .	No	String		
Constant Value	Only used if <b>Parameter Input Option</b> is <i>Constant</i> .	No	String		
<b>API Authentication</b>					
Authentication Type	<p>Authentication type against the web service. The options are the following:</p> <ul style="list-style-type: none"> <li>No Auth.</li> <li>Basic - username and password for Base64 basic authentication.</li> <li>API Key - can be added to a Header or to the URL (Query Param) or both.</li> </ul>	Yes	Drop-down list		

Configuration Option	Description	Mandatory	Data Type	Default	Example
Show Advanced Settings	Controls the display of 'Advanced Settings', below.	No	Checkbox	Unchecked	
<b>Advanced Settings</b>					
Unique Prompt Name	For PeopleSoft, to determine the type of identifier being passed. This complements the prompt field value, which is determined by the <b>User Identifier</b> .				
<b>Categories and Items – Only visible if the Vendor Name is set to Configuration.</b>					
Categories					
Category Title	The title for this category	No	String		Category 1
Filter	The title of the filter to which this category belongs	No	String		Filter 1
Action	The action for this category – External URL, description, or none.	No	Object	None	
Items					
Item Title		No	String		Item 1
Image URL	The URL for the image for the given item that displays on the live tile – if this field is not populated, the image block does not display on the live tile.	No	URI		
Description	The description for this item.	No	String		Description 1
External URL	The URL for this item to link to.	No	URI		<a href="https://www.link.here">https://www.link.here</a>
Due Date	Please enter a date in the format DD/MM/YYYY. Leave empty if there is no due date.	No	String		23/04/2021
Caching Location	The location where favorites and checkbox selections are cached.	No	Object	Device (local storage)	
Cache Expiry	The number of days the cached data is saved in the database.	No	Number	365	
<b>Live Tile</b>					
Enable Live Tile	Select to enable list Live Tile.	No	Checkbox	Selected	
Show Category Title		No	Checkbox	Selected	

Configuration Option	Description	Mandatory	Data Type	Default	Example
Flip Through Categories		No	Checkbox	Selected	
Flip Rate		No	Number	1	
<b>Look and Feel</b>					
Primary Theme Color	Select a color for the main elements on the page.	No	Color Picker	#444444	
Secondary Theme Color	Select a color for the secondary elements on the page.	No	Color Picker	#6f8ea4	
<b>Text/Labels</b>					
Page Title		No	String	To Do List	
Favorites Page Title		No	String	Favorites	
Filter Page Title		No	String	Select a Filter Value	
Home Label		No	String	Home	
Favorites Tab Label		No	String	Favorites	
Search Bar Text		No	String	Enter search term...	
Search Button Text		No	String	Search	
No Search Results Text		No	String	No Results	
View More Button Label	The label for the View More button on the live tile.	No	String	View More	
No Favorites Message		No	String	You have no favorites saved	
Error Message		No	String	Something went wrong. Please try again later.	