
System requirements for TLS 1.2 for Windows users

Refer to the flowchart or table below for details on checking if your system supports TLS 1.2.

Note

Make sure you meet requirements A and B.

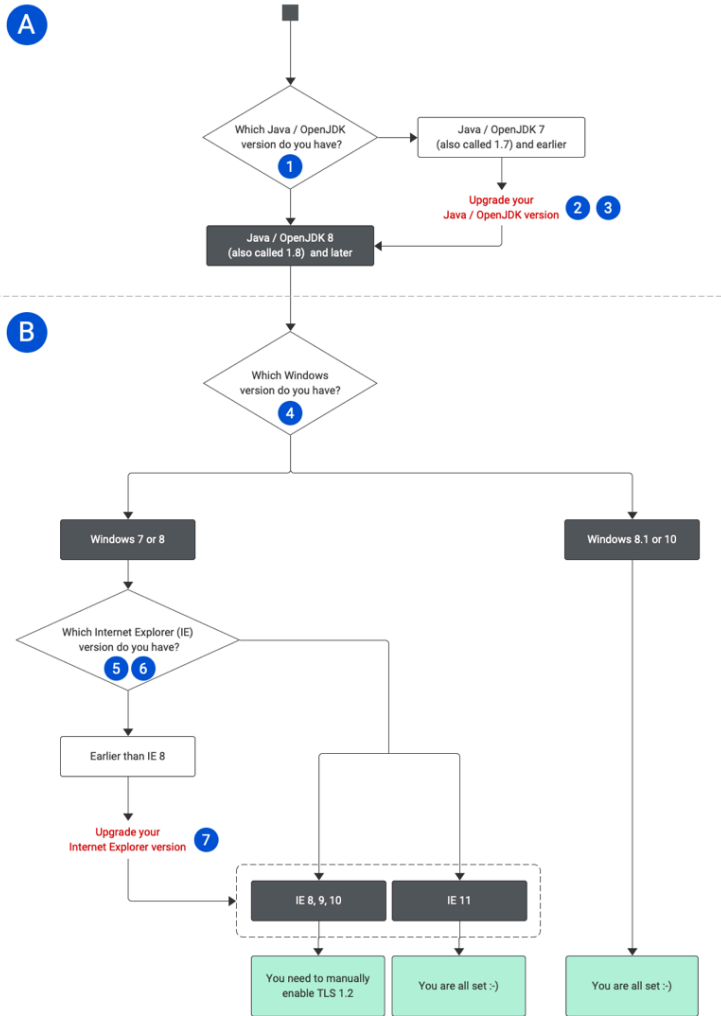
System requirements for Mac users: [refer here](#).

The numbers in the flowchart refer to the numbers in the table below it and provide additional details.

- [Flowchart](#)
- [Table](#)
- [Older versions](#)
 - [Enable TLS manually](#)

For any questions please refer to your RefWorks administrator or to [RefWorks Support](#).

How to check if Windows supports TLS 1.2: Flowchart



How to check if Windows supports TLS 1.2: Table

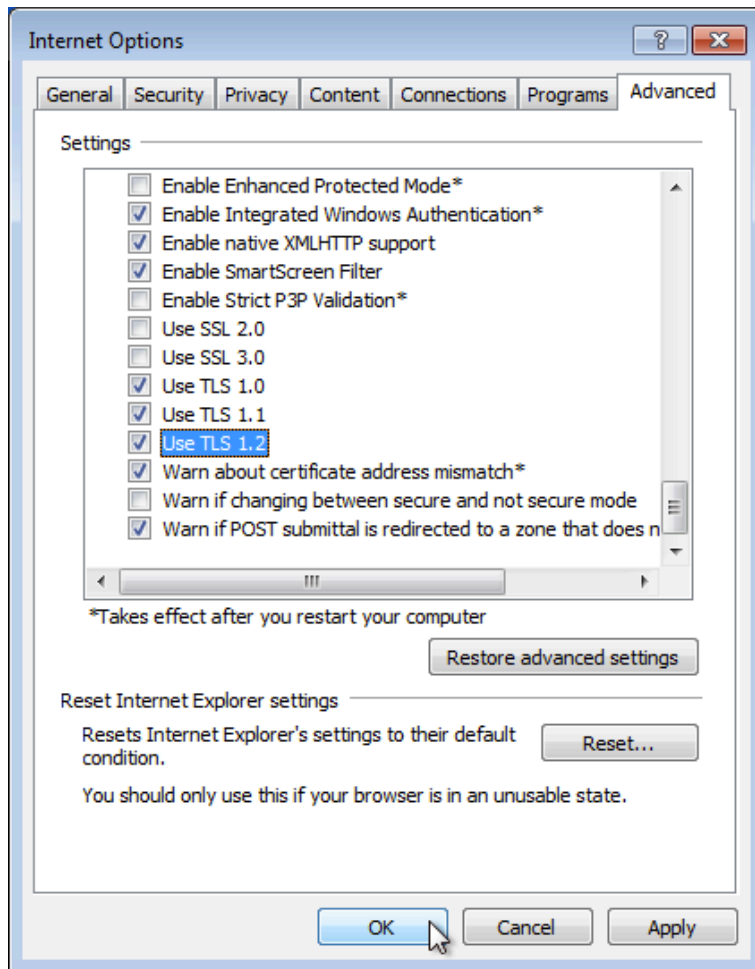
	Requirement	Additional Information
A	Java / OpenJDK 8 (also called 1.8) and later	<ul style="list-style-type: none"> How do I check my Java / OpenJDK version? How do I upgrade my Java version? How do I upgrade my OpenJDK version? <i>Refer to documentation of the OpenJDK provider you are using.</i>
	<ul style="list-style-type: none"> Windows 8.1 or 10 OR <ul style="list-style-type: none"> Windows 7 or 8 AND Internet Explorer 11 OR	<ul style="list-style-type: none"> How do I check my Windows version? How do I check my Internet Explorer version? Do I need this Internet Explorer (IE) version even if it is not my primary browser? <i>Yes. IE may not be your primary browser but is used by Microsoft add-ons.</i> How do I upgrade my Internet Explorer?

- Windows 7 or 8 AND Internet Explorer 8-10 AND [manually enable TLS 1.2](#)

If you are using Windows 7 or 8 and Internet Explorer 8, 9 or 10 you need to manually enable TLS 1.2

How to Enable TLS 1.2 manually

1. Open Internet Explorer.
2. Open the **Tools** menu (select the gear icon near the top-right), then choose **Internet options**.
3. Select the **Advanced** tab. Scroll down to the **Security** section at the bottom of the **Settings** list.



4. Select Use TLS 1.1 and Use TLS 1.2.
5. For extra security, deselect Use SSL 3.0. When complete, your settings should match the following:

Selected: Use TLS 1.0, Use TLS 1.1 and Use TLS 1.2

Not selected: Use SSL 2.0 and Use SSL 3.0

6. Select **Apply**.
7. Select **OK**.