

## System requirements for TLS 1.2 for Mac users

Refer to the flowchart or table below for details on checking if your system supports TLS 1.2.

### Note

Make sure you meet requirements A, B and C.

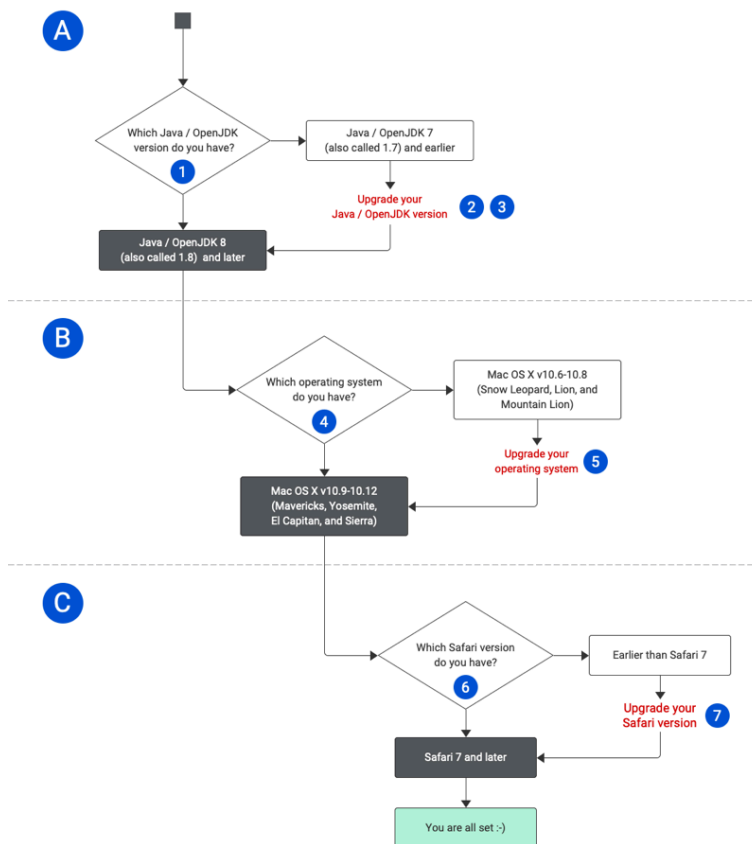
System requirements for Windows users: [refer here](#).

The numbers in the flowchart refer to the numbers in the table below it and provide additional details.

- [Flowchart](#)
- [Table](#)

For any questions please refer to your RefWorks administrator or to [RefWorks Support](#).

## How to check if my Mac supports TLS 1.2: Flowchart



Decision tree for determining if your system supports TLS 1.2; refer to the table below for details

---

## How to check if my Mac supports TLS 1.2: Table

|          | Requirement  | Additional information   |
|----------|--|--|
| <b>A</b> | Java / OpenJDK 8 (also called 1.8) and later                       | <ul style="list-style-type: none"><li>• <a href="#">How do I check my Java / OpenJDK version?</a></li><li>• <a href="#">How do I upgrade my Java version?</a></li><li>• How do I upgrade my OpenJDK version? <i>Refer to documentation of the OpenJDK provider you are using</i></li></ul>                   |
| <b>B</b> | Mac OS X v10.9-10.12 (Mavericks, Yosemite, El Capitan, and Sierra) | <ul style="list-style-type: none"><li>• <a href="#">How do I check my Mac OS version?</a></li><li>• <a href="#">How do I upgrade my Mac OS version?</a></li></ul>  |
| <b>C</b> | Safari v7 or later   | <ul style="list-style-type: none"><li>• How do I check my Safari version? <i>Choose Safari from the top menu bar. Select the About Safari option from the drop-down menu. The version number will be on the window that pops up.</i></li><li>• <a href="#">How do I upgrade my Safari version?</a></li></ul> |